

ADDENDUM

Addendum No. 1

Owner: City of Owosso
Project: 2024 Street Light Project
Engineer: City of Owosso

NOTICE TO ALL PROSPECTIVE BIDDERS

BIDS DUE: March 12, 2024 at 3pm

=====

This Addendum is a part of the Contract Documents and modifies the previously issued Bidding Documents. Acknowledge receipt of this Addendum in the space provided on the "*Signature Page and Legal Status*" section of the Bid Proposal. Failure to do so may result in rejection of the Bid.

ITEM NO. 1:

Add 2024 Street Light Project Plans to the Contract Documents.

END OF ITEM NO. 1

END OF ADDENDUM NO. 1

UTILITY CONTACTS

THE EXISTING UTILITIES LISTED BELOW AND SHOWN ON THE PLANS REPRESENT THE BEST INFORMATION AVAILABLE AT THE TIME OF PREPARING THESE PANS. THIS INFORMATION DOES NOT RELIEVE THE CONTRACTOR OF THE REASONABILITY TO BE SATISFIED AS TO ITS ACCURACY AND LOCATION OF EXISTING UTILITIES.

CHARTER COMMUNICATIONS
ATT: MARK KELLY
1480 S. VALLEY CENTER DRIVE
BAY CITY, MI 48706

CABLE TV
PHONE: 989-233-9404
mark.kelly@chartercom.com

CITY OF OWOSSO
ATT: CLAYTON WEHNER, P.E.
301 W. MAIN STREET
OWOSSO, MI 48867

ROAD
989-725-0551
clayton.wehner@ci.owosso.mi.us

CITY OF OWOSSO
ATT: RYAN SUCHANEK
301 W. MAIN STREET
OWOSSO, MI 48867

SANITARY SEWER & WATER MAIN
989-725-0550
ryan.suchanek@ci.owosso.mi.us

CONSUMERS ENERGY
ATT: TRACY MAHAR
1801 W. MAIN ST
OWOSSO, MI 48867

ELECTRIC
OFFICE: 989-729-3250
CELL: 517-204-9018
trmahar@cmsenergy.com

CONSUMERS ENERGY
ATT: ADAM BERTRAM
530 W. WILLOW STREET
P.O. BOX 30162
LANSING, MI 48909

GAS
OFFICE: 517-374-2375
CELL: 517-614-8570
adam.bertram@cmsenergy.com

DAYSTARR COMMUNICATIONS
ATT: JARED JACKSON
307 N. BALL STREET
OWOSSO, MI 48867

FIBER
PHONE: 989-720-6004
FAX: 989-720-6060
jared.jackson@daystarrfiber.net

FRONTIER COMMUNICATIONS
ATT: HAROLD ROTH
1943 W. M-21
OWOSSO, MI 48847

FIBER
PHONE: 989-627-9759
harold.roth@ftr.com

SHIAWASSEE COUNTY HEALTH DEPARTMENT
ENVIRONMENTAL HEALTH DIVISION
ATT: STEVE ALWORDEN
201 N. SHIAWASSEE STREET
CORUNNA, MI 48817

SOIL EROSION AND SEDIMENTATION CONTROL
PHONE: 989-743-2289
FAX: 989-743-2413
salworden@shiaswasseechd.net

CALL MISS DIG AT 1-800-482-7171 OR 811 THREE DAYS, EXCLUDING SATURDAY, SUNDAY, AND HOLIDAY, BEFORE STARTING YOUR PROJECT.

MDOT ROAD STANDARD PLANS

WHERE THE FOLLOWING ITEMS ARE CALLED FOR ON PLANS, THEY ARE TO BE CONSTRUCTED ACCORDING TO THE MDOT STANDARD PLAN GIVEN BELOW OPPOSITE EACH ITEM UNLESS OTHERWISE INDICATED.

DRAINAGE STRUCTURES	R-1-G*
COVER B	R-7-F
MONUMENT BOXES	R-11-E
COVER K	R-15-F
COVER Q	R-18-F
SIDEWALK RAMP AND DETECTABLE WARNING DETAILS	R-28-J*
DRIVEWAY OPENINGS & APPROACHES AND CONCRETE SIDEWALKS	R-29-I
CONCRETE CURB AND CONCRETE CURB AND GUTTER*	R-30-G
BUMPER & PARKING RAIL AND MISC. WOOD POSTS	R-74-D
GRANULAR BLANKET, UNDERDRAINS, AND OUTLET ENDINGS FOR SEWER UNDERDRAINS, AND SEWER BULKHEADS	R-80-E
BEDDING AND FILLING AROUND PIPE CULVERTS	R-82-D
UTILITY TRENCHES	R-83-C
SOIL EROSION & SEDIMENT CONTROL MEASURES	R-96-E
SEEDING AND TREE PLANTING	R-100-H

*SPECIAL DETAILS INCLUDED IN PROPOSAL OR MODIFIED IN GENERAL PLANS



Know what's below.
Call before you dig.

CITY OF OWOSSO

2024 STREET LIGHT PROJECT

SHIAWASSEE COUNTY
SECTION 24, T7N-R2E, CITY OF OWOSSO
POP: 15,194 (2010 CENSUS)



LOCATION MAP
CITY OF OWOSSO

SHEET NO.	DESCRIPTION
CS	COVER SHEET
D1	LEGEND, MISCELLANEOUS ESTIMATES, & SESC KEY
D2	ELECTRIC STANDARD DETAILS
D3	STREET & SIDEWALK ITEMS GENERAL NOTES AND DETAILS
TR1 - TR2	MAINTAINING TRAFFIC PLAN
CM1	COMSTOCK ST - REMOVAL & CONSTRUCTION PLAN
MM1	MAIN ST - REMOVAL & CONSTRUCTION PLAN
PR1	PARK ST - REMOVAL & CONSTRUCTION PLAN
WS1	WASHINGTON ST - REMOVAL PLAN
WS2	WASHINGTON ST - CONSTRUCTION PLAN

CITY OF OWOSSO, MICHIGAN
ENGINEERING DIVISION
DEPT. OF PUBLIC SERVICE

NO.	DATE	BY	REVISIONS
1	2/19/24	CW	IFB PLANS
			ORIGINAL PLAN

2024 STREET LIGHT PROJECT
COVER SHEET
JANUARY, 2023
PROJECT NO.
FIELD BOOK
PG.
CS

PROJECT LOCATION

EXISTING FEATURES LEGEND

SYMBOL	DESCRIPTION	SYMBOL	DESCRIPTION	SYMBOL	DESCRIPTION
	TREE (DECIDUOUS)		CABLE BOX		SURVEY CONTROL POINT
	BUSH		TELEPHONE RISER		BENCHMARK
	TREE (CONIFEROUS)		TELEPHONE MANHOLE		SECTION CORNER
	DEAD TREE		TELEPHONE HANDHOLE		BOUNDARY LINE
	STUMP		ELECTRICAL RISER		PROPERTY LINE
	MANHOLE		ELECTRICAL MANHOLE		WATERMAIN
	SANITARY CLEANOUT		ELECTRICAL HANDHOLE		SANITARY SEWER
	RD. CATCH BASIN		POWER POLE		STORM SEWER
	SQ. CATCH BASIN		LIGHT POLE		CULVERT (21" AND UNDER)
	FIRE HYDRANT		GUY POLE		CULVERT (24" AND UP)
	WATER VALVE		GUY ANCHOR		CABLE T.V.
	CURB STOP & BOX		PED CROSSING SIGNAL		TELEPHONE
	WELL		YARD LIGHT		ELECTRIC
	WATER MANHOLE		SIGN		GAS
	WATER METER		MAILBOX		OVERHEAD LINES
	SOIL BORING		GUARD POST		GUARDRAIL
	MONITORING WELL		FOUND CONC. MONUMENT		FENCE
			FOUND IRON ROD		WOODLINE
			SET IRON ROD		

NOTE: ALL ITEMS LISTED ON THE LEGEND MAY NOT BE PRESENT ON DRAWING.

MISCELLANEOUS ESTIMATES

THE FOLLOWING ITEMS OF WORK SHALL BE DONE AS THEY APPLY THROUGHOUT THE PROJECT. THESE ITEMS ARE NOT DETAILED OR INCLUDED ON THE PLAN AND PROFILE SHEETS

Quantity	Unit	Pay Item
1	LSUM	Mobilization, Max \$45,400
70	Ft	Curb and Gutter, Rem
50	Syd	Pavt, Rem, Modified
24	Syd	Sidewalk, Rem, Modified
3	Cyd	Subbase, CIP
50	Syd	Aggregate Base, 8 inch, Modified
25	Ton	Hand Patching
40	Ft	Curb and Gutter, Conc, Det F4
20	Ft	Detectable Warning Surface, Modified
30	Ft	Curb Ramp Opening, Conc
100	Sft	Curb Ramp, Conc, 4 inch
100	Sft	Curb Ramp, Conc, 7 inch
5	Ea	Sign, Type III, Rem
5	Ea	Sign, Type III, Erect, Salv
50	Ft	Post, Steel, 3 pound
50	Ton	Maintenance Gravel

MAINTAINING TRAFFIC QUANTITIES

Quantity	Unit	Pay Item
18	Ea	Barricade, Type III, High Intensity, Double Sided, Furn & Oper
1500	Ft	Pedestrian, Type II Channelizer, Temp
1	Ea	Lighted Arrow, Type C, Furn & Oper
1	LSUM	Minor Traffic Devices, Max \$10,000
100	Ea	Plastic Drum, High Intensity, Furn & Oper
140	Sft	Sign, Type B, Temp, Prismatic, Furn & Oper

REMOVAL LEGEND

	Pavt, Rem
	Sidewalk, Rem, Modified
	STANDARD SOIL EROSION KEY

CONSTRUCTION LEGEND

	Sidewalk, Conc, ___ inch
	Sidewalk, Conc, ___ inch, Decorative
	Conduit, Directional Bore, #, ___ inch
	Proposed Street Light
	Proposed Handhole
	STANDARD SOIL EROSION KEY

**MICHIGAN DEPARTMENT OF MANAGEMENT AND BUDGET
S-E-S-C KEYING SYSTEM**

KEY	BEST MANAGEMENT PRACTICES	SYMBOL	WHERE USED
EROSION CONTROLS			
E1	SELECTIVE GRADING AND SHAPING		To reduce steep slopes and erosive velocities.
E2	GRUBBING OMITTED		For use on steep slopes to prevent rilling, gullying, and reduce sheet flow velocity or where clear vision corridors are necessary.
E3	SLOPE ROUGHENING AND SCARIFICATION		Where created grades cause increased erosive velocities. Promotes infiltration and reduces runoff velocity.
E4	TERRACES		On relatively long slopes up to 8% grades with fairly stable soils.
E5	DUST CONTROL		For use on construction sites, unpaved roads, etc. to reduce dust and sedimentation from wind and construction activities.
E6	MULCH		For use in areas subject to erosive surface flows or severe wind or on newly seeded areas.
E7	TEMPORARY SEEDING		Stabilization method utilized on construction sites where earth change has been initiated but not completed within a 2 week period.
E8	PERMANENT SEEDING		Stabilization method utilized on sites where earth change has been completed (final grading attained).
E9	MULCH BLANKETS		On exposed slopes, newly seeded areas, new ditch bottoms, or areas subject to erosion.
E10	SODDING		On areas and slopes where immediate stabilization is required.
E11	VEGETATED CHANNELS		For use in created stormwater channels. Vegetation is used to slow water velocity and reduce erosion within the channel.
E12	RIPRAP		Use along shorelines, waterways, or where concentrated flows occur. Slows velocity, reduces sediment load, and reduces erosion.
E13	GABION WALLS		On newly created or denuded stream banks to reduce velocity until permanent stabilization is achieved or on existing banks to retard erosive velocities.
E14	ENERGY DISSIPATOR		Where the energy transmitted from a concentrated flow of surface runoff is sufficient to erode receiving area or watercourse.
E15	TEMPORARY SLOPE DRAIN		Where surface runoff temporarily accumulates or sheet flows over the top of a slope and must be conveyed down a slope in order to prevent erosion.
E16	SLOPE DRAIN		Where concentrated flow of surface runoff must be permanently conveyed down a slope in order to prevent erosion.

B = BIOENGINEERING

**MICHIGAN DEPARTMENT OF MANAGEMENT AND BUDGET
S-E-S-C KEYING SYSTEM**

KEY	BEST MANAGEMENT PRACTICES	SYMBOL	WHERE USED
E17	CELLULAR CONFINEMENT SYSTEMS		Used on steep slopes and high velocity channels.
E18	PLASTIC SHEETS		Used on exposed slopes, seeded areas, new ditch bottoms, and areas subject to surface runoff and erosion. Used as a liner in temporary channels and to stabilize stockpiles.
E19	TEMPORARY DRAINAGEWAY/ STREAM CROSSING		Use on construction sites where stream/drainage crossings are required.
E20	TEMPORARY BYPASS CHANNEL		Use within existing stream corridors when existing flow cannot be interrupted, and at culvert and bridge repair sites.
E21	LIVE STAKING		In areas requiring protection of slopes against surface erosion and shallow mass wasting.
EROSION / SEDIMENT CONTROLS			
ES31	CHECK DAM		Used to reduce surface flow velocities within constructed and existing flow corridors.
ES32	STONE FILTER BERM		Use primarily in areas where sheet or rill flow occurs and to accommodate dewatering flow.
ES33	FILTER ROLLS		In areas requiring immediate protection of slopes against surface erosion and gully formation and for perimeter sediment control.
ES34	SAND FENCE		For use in areas susceptible to wind erosion, especially where the ground has not yet been stabilized by other means.
ES35	DEWATERING		Use where construction activities are limited by the presence of water and dry work is required.
ES36	DIVERSION DIKE/BERM		Within existing flow corridors to address or prevent erosion and sedimentation, or on disturbed or unstable slopes subject to erosive surface water velocities.
ES37	DIVERSION DITCH		In conjunction with a diversion dike, or where diversion of upslope runoff is necessary to prevent damage to destabilized or disturbed construction areas.
ES38	COFFERDAM/SHEET PILING		Constructed along or within water corridor or waterbody to provide dry construction area.
ES39	STREAMBANK BIOSTABILIZATION		For use along banks where stream and riparian zones may have difficulty recovering from the long-term effects of erosion.
ES40	POLYMERS		To minimize soil erosion and reduce sedimentation in water bodies by increasing soil particle size.
ES41	WATTLES		In areas requiring protection of slopes against surface erosion and gully formation.

B = BIOENGINEERING

**MICHIGAN DEPARTMENT OF MANAGEMENT AND BUDGET
S-E-S-C KEYING SYSTEM**

KEY	BEST MANAGEMENT PRACTICES	SYMBOL	WHERE USED
SEDIMENT CONTROLS			
S51	SILT FENCE		Use adjacent to critical areas, to prevent sediment laden sheet flow from entering these areas.
S52	CATCH BASIN SEDIMENT GUARD		Use in or at stormwater inlets, especially at construction sites.
S53	STABILIZED CONSTRUCTION ACCESS		Used at every point where construction traffic enters or leaves a construction site.
S54	TIRE WASH		For use on construction sites where vehicular traffic requires sediment removed from its tires in highly erosive areas.
S55	SEDIMENT BASIN		At the outlet of disturbed areas and at the location of a permanent detention basin.
S56	SEDIMENT TRAP		In small drainage areas, along construction site perimeters, and above check dams or drain inlets.
S57	VEGETATED BUFFER/FILTER STRIP		Use along shorelines, waterways, or other sensitive areas. Slows velocity, reduces sediment load, and reduces erosion in areas of sheet flow.
S58	INLET PROTECTION FABRIC DROP		Use at stormwater inlets, especially at construction sites.
S59	INLET PROTECTION FABRIC FENCE		Use at stormwater inlets, especially at construction sites.
S60	INLET PROTECTION STONE		Use around urban stormwater inlets.
S61	TURBIDITY CURTAIN		Use during construction adjacent to a water resource, to contain sediment within the work area when other BMP's cannot be used.

B = BIOENGINEERING

SOIL EROSION/SEDIMENTATION CONTROL OPERATION TIME SCHEDULE												
CONSTRUCTION SEQUENCE	JAN	FEB	MAR	APR	MAY	JUN	JUL	AUG	SEP	OCT	NOV	DEC
STRIP AND STOCKPILE TOPSOIL								N/A				
ROUGH GRADE/ SEDIMENT CONTROL								N/A				
TEMP CONTROL MEASURES												
STORM FACILITIES								N/A				
TEMP CONSTRUCTION ROADS								N/A				
FOUNDATION/ BLDG. CONSTRUCTION								N/A				
SITE CONSTRUCTION												
PERM CONTROL MEASURES												
FINISH GRADING												
LANDSCAPING								N/A				

CONSTRUCTION SEQUENCE

1. INSTALLATION OF TEMPORARY EROSION CONTROL MEASURES.
2. EXCAVATION, CONDUIT AND LIGHT INSTALLATION.
3. PERMANENT MEASURES (CONCRETE).

CITY OF OWOSSO, MICHIGAN
ENGINEERING DIVISION
DEPT. OF PUBLIC SERVICE

NO.	REVISIONS	DATE	BY
1	IFB PLANS	2/19/24	CW

BENCH MARK DATA	DESCRIPTION
ELEV.	

2024 STREET LIGHT PROJECT
LEGEND, MISCELLANEOUS ESTIMATES & SESC KEY
JANUARY, 2023
PROJECT NO.

GENERAL NOTES

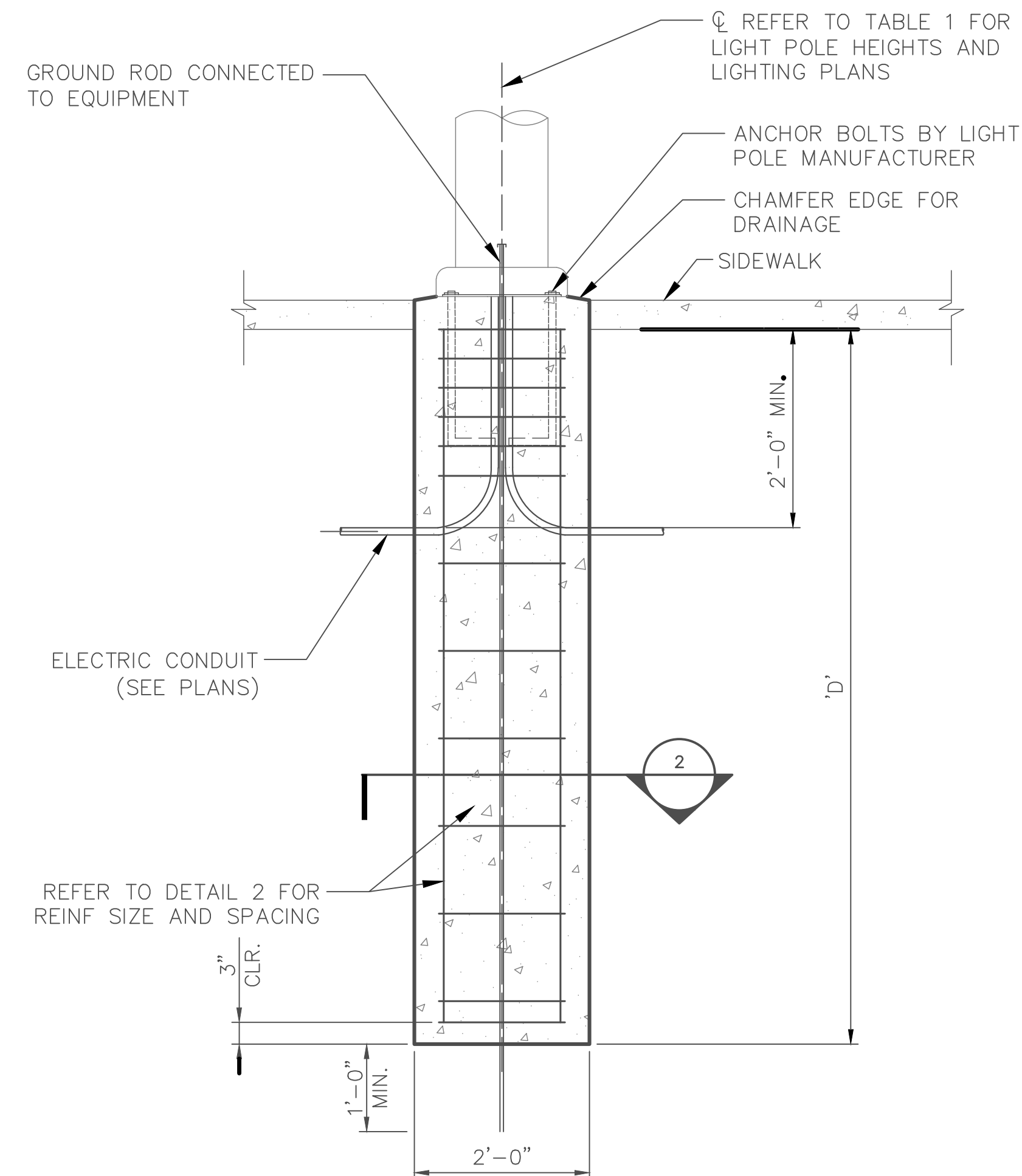
1. THE CONTRACTOR IS SOLELY RESPONSIBLE FOR JOB SAFETY AND CONSTRUCTION PROCEDURES.
2. SEE CONSTRUCTION SHEETS FOR THE LOCATION OF STRUCTURAL ELEMENTS, LIGHT POLE TYPE LOCATIONS, SIDE FEATURES, UNDERGROUND UTILITIES, AND SITE WORK LOCATIONS. VERIFY LOCATIONS FOR ALL UNDERGROUND UTILITIES BEFORE PROCEEDING WITH FOUNDATION EXCAVATION.
3. CONTRACTOR MUST PROVIDE CONTINUOUS CONTROL OF SURFACE AND UNDERGROUND WATER AS REQUIRED DURING CONSTRUCTION SUCH THAT THE WORK IS DONE IN THE DRY.
4. IT MUST BE THE RESPONSIBILITY OF THE CONTRACTOR TO PROTECT EXISTING FACILITIES, STRUCTURES, AND UTILITY LINES FROM ALL DAMAGE THROUGHOUT THE DURATION OF THE PROJECT. CONTRACTOR MUST PROTECT THE WORK, ADJACENT PROPERTY, AND THE PUBLIC. EXTREME CARE MUST BE TAKEN NEAR UNDERGROUND UTILITIES.
5. CONTRACTOR MUST FIELD VERIFY ALL DIMENSIONS AND CONDITIONS PRIOR TO PROCEEDING WITH ANY WORK AND REPORT DISCREPANCIES IMMEDIATELY TO THE ENGINEER.
6. NOTIFY THE ENGINEERING IMMEDIATELY OF ANY EXISTING FOUNDATION CONDITIONS OR DETAILS THAT ARE IN CONFLICT WITH THOSE SHOWN IN THE DRAWINGS.
7. REFER TO THE ENGINEER FOR INSTRUCTION FOR ANY DIMENSION NOT GIVEN ON DRAWINGS. SCALING OF DRAWINGS MUST NOT BE USED TO OBTAIN OR VERIFY ANY DIMENSION SHOWN ON THE DRAWINGS.

FOUNDATIONS

1. A GEOTECHNICAL EXPLORATION WAS COMPLETED BY SME AND RECOMMENDATIONS ARE CONTAINED IN THEIR REPORT PROJECT NO 09139800 DATED JANUARY 16, 2023. THE REPORT PROVIDED THE FOLLOWING PROPERTIES OF THE IN-PLACE SOILS:
 VERTICAL FOUNDATION PRESSURE = 1,500 PSF
 DESIGN LATERAL SOIL LOAD = 120 PCF
 ASSUMED IN-SITU SOIL DENSITY = 120 PCF
 COHESION = 1,000 PCF
2. CONTRACTOR MUST ENGAGE GEOTECHNICAL TESTING LABORATORY TO CONFIRM SOIL PREPARATION AND SPECIFY PROCEDURES AND SPECIFY COMPACTION REQUIREMENTS NECESSARY TO OBTAIN THE DESIGN SOIL PROPERTIES. IT MUST BE THE RESPONSIBILITY OF THE CONTRACTOR TO CONTRACT ENGINEER OF RECORD IF ASSUMED SOIL PROPERTIES CANNOT BE OBTAINED ON SITE.
3. FOUNDATION MUST BE EXCAVATED IN UNDISTURBED OR PROPERLY COMPACTED FILL.
4. SONOTUBE TYPE FORMS SHALL BE USED FOR THE FOUNDATIONS. IF WET CONDITIONS ARE ENCOUNTERED, METAL OR PLASTIC CASINGS SHALL BE USED.
5. WHERE LOOSE/WET SANDS ARE ENCOUNTERED, UNDERCUT THE GRANULAR SOIL BY NO MORE THAN 2 FEET AND BACKFILL WITH MDOT 6AA AGGREGATE TO THE DESIGN BEARING ELEVATION.

CAST-IN-PLACE CONCRETE

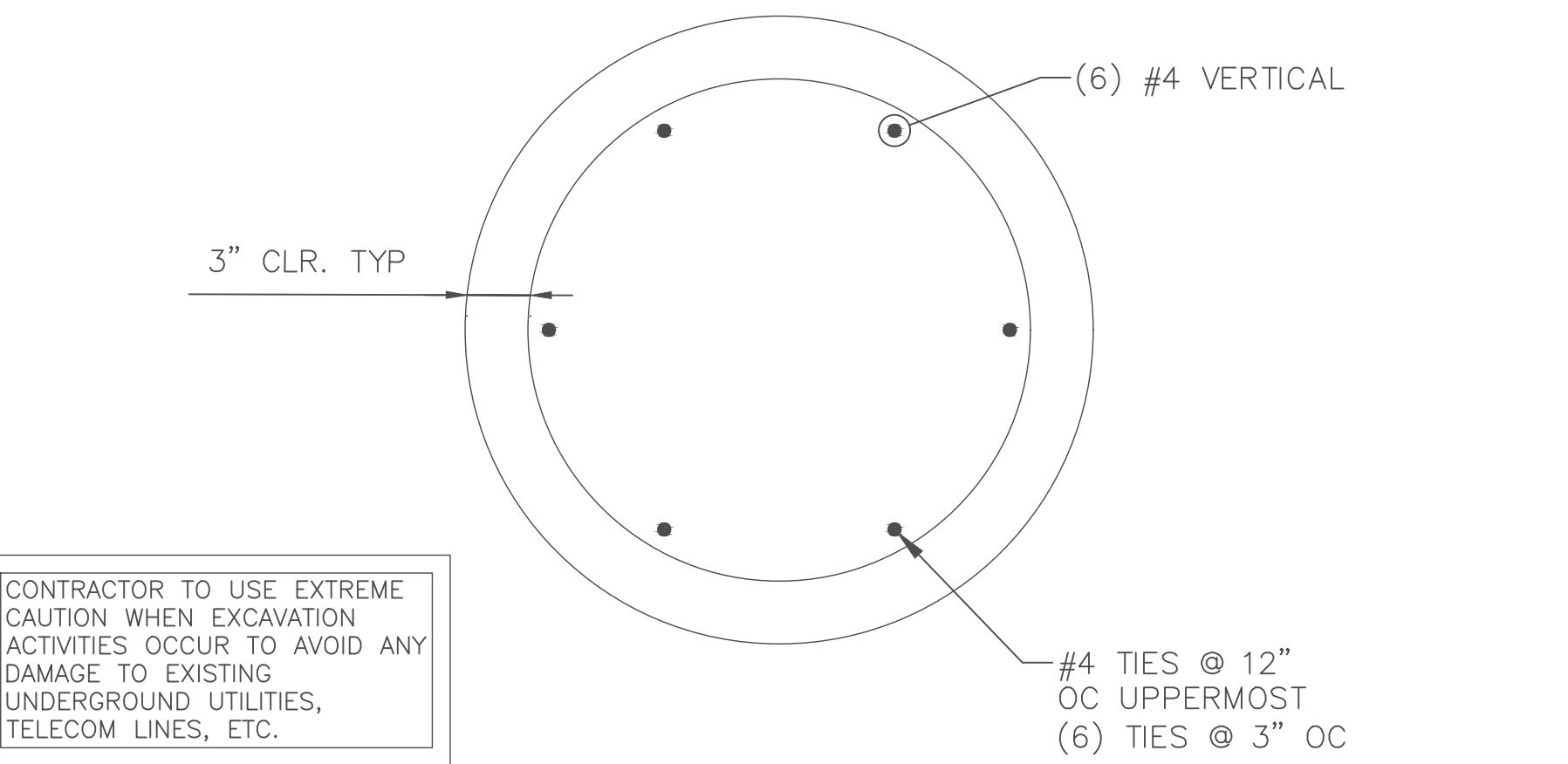
1. READY-MIX CONCRETE WORK MUST CONFORM TO ASTM C94.
2. STRUCTURAL CONCRETE MATERIALS MUST CONFORM TO THE FOLLOWING:
 a. TYPE II PORTLAND CEMENT - ASTM C150
 b. AGGREGATES (3/4" MAX) - ASTM C33
 c. AIR ENTRAINING (4.5% MIN - 7% MAX) - ASTM C260
 d. WATER REDUCING - ASTM C494
 e. FLY ASH (MAX 25% BY WEIGHT) , TYPE F - ASTM C618
 f. WATER - CLEAN AND POTABLE
 g. REINFORCING STEEL - ASTM A615 GRADE 60
 h. GROUT SHALL BE NON-SHRINK, NON-METALLIC
3. STRUCTURAL CONCRETE MUST CONFORM TO THE FOLLOWING:
 a. CONCRETE MIXES AND EXPOSURE CLASS ACCORDING TO ACI 318:
 1. FOUNDATIONS 5,000 PSI CLASS F3
 b. MAXIMUM WATER-TO-CEMENT RATIO: 0.4
 c. USE OF CALCIUM CHLORIDE IS NOT PERMITTED
4. REQUIRED SLUMP 4" (BEFORE ADDITION OF SUPERPLASTICIZER)
5. ALL CONCRETE MATERIALS, PLACING, AND HANDLING MUST BE IN ACCORDANCE WITH THE LATEST EDITION OF ACI 318 AND ACI 301. CONCRETE WORK MUST CONFORM TO THE CURRENT VERSION OF ACI 318.
6. SUBMITTALS:
 a. MIX DESIGN FOR EACH TYPE OF CONCRETE SPECIFIED MUST BE SUBMITTED FOR APPROVAL
 b. PRODUCT DATA AND MATERIAL CERTIFICATES.
7. CONCRETE MUST BE PLACED WITHIN 90 MINUTES OF BATCH TIME.
8. ALL CONCRETE MUST BE CONSOLIDATED IN PLACE USING INTERNAL VIBRATORS.
9. CAST-IN-PLACE CONCRETE MUST BE CONTINUOUSLY CURED FOR 7 DAYS FOLLOWING INITIAL SET.
10. CONCRETE MUST BE CURED IMMEDIATELY AFTER FINISHING OPERATIONS IN ACCORDANCE WITH ONE OF THE FOLLOWING METHODS:
 a. APPLY A LIQUID MEMBRANE FORMING CHEMICAL CURING COMPOUND IN ACCORDANCE WITH ASTM C309
 b. WET CURE IN ACCORDANCE WITH ACI 301
11. REMOVE LIQUID MEMBRANE FORMING CHEMICAL CURING COMPOUND AFTER CURING PERIOD HAS ELAPSED, REMOVE CURING COMPOUND WITHOUT DAMAGING CONCRETE SURFACES BY METHOD RECOMMENDED BY CURING COMPOUND MANUFACTURER.
12. ALL EXPOSED CONCRETE MUST HAVE A RUBBED SURFACE FINISH IMMEDIATELY AFTER REMOVING THE FORMS. ALL HONEYCOMB VOIDS, AND OTHER SURFACE DEFECTS AND IRREGULARITIES MUST BE GROUTED. THE SURFACE MUST THEN BE THOROUGHLY DAMPENED AND RUBBED WITH A NO. 16 CARBORUNDUM STONE OR EQUAL ABRASIVE TO CREATE A UNIFORM SURFACE PASTE. THE RUBBING MUST BE CONTINUED TO REMOVAL ALL FORM MARKS AND SURFACE IRREGULARITIES PRODUCING A SMOOTH, DENSE SURFACE. AFTER CURING, THE SURFACE MUST THEN BE RUBBED WITH A NO. 30 CARBORUNDUM STONE UNTIL THE SURFACE IS SMOOTH IN TEXTURE AND UNIFORM IN COLOR. REMOVAL ALL LATHER, POWDER, AND DUST ON RUBBED SURFACES.
13. DETAILING OF REBAR MUST BE IN ACCORDANCE WITH THE LATEST REVISION OF THE ACI DETAILING MANUAL AND CONCRETE REINFORCING INSTITUTE'S LATEST EDITION OF "MANUAL OF STANDARD PRACTICE"
14. ALL DIMENSIONS PERTAINING TO LOCATION OF REINFORCING BARS ARE TO CENTERLINE OF BARS EXCEPT WHERE THE CLEAN DIMENSION IS SHOWN TO FACE OF CONCRETE.
15. REINFORCEMENT DETAIL DIMENSIONS MUST BE OUT-TO-OUT OF BARS.
16. PROVIDE 3" CONCRETE COVER OVER REINFORCING BARS EXCEPT OTHERWISE NOTED.
17. BARS MUST BE FIELD TIED. WELDING IS NOT PERMITTED.
18. SUPPORT REINFORCEMENT IN ITS PROPERTY LOCATION FROM THE FORMWORK DURING CONCRETE OPERATION.
19. BAR SUPPORTS, DESIGN DETAILING, FABRICATION, AND PLACING OF REINFORCING BARS MUST BE IN ACCORDANCE WITH ACI 318.
20. PROVIDE 3/4" CHAMFERS AT ALL EXPOSED EDGES OF CONCRETE SURFACES.
21. FORM TIES AND REINFORCING BAR SUPPORTS MUST BE OF NON-CORROSIVE MATERIAL INCLUDING, BUT NOT LIMITED TO, FIBERGLASS, PLASTIC, AND/OR CONCRETE BLOCK.
22. CONTRACTOR IS RESPONSIBLE FOR THE PROPER DESIGN AND CONSTRUCTION OF ALL FORMWORK AND SHORING. DESIGN MUST BE PERFORMED BY A LICENSED PROFESSIONAL ENGINEERING IN THE STATE OF MICHIGAN.



NOTES:
 1. DESIGN BASED ON A WIND SPEED OF 107 MPH PER LRFD SPECIFICATION STRUCTURAL SUPPORTS FOR HIGHWAY SIGNS, LUMINAIRES, AND TRAFFIC SIGNALS (1ST EDITION).
 2. FOUNDATION DESIGN DOES NOT INCLUDE LOADING FOR BANNERS, PLANTINGS, OR OTHER MISC. LOADS.

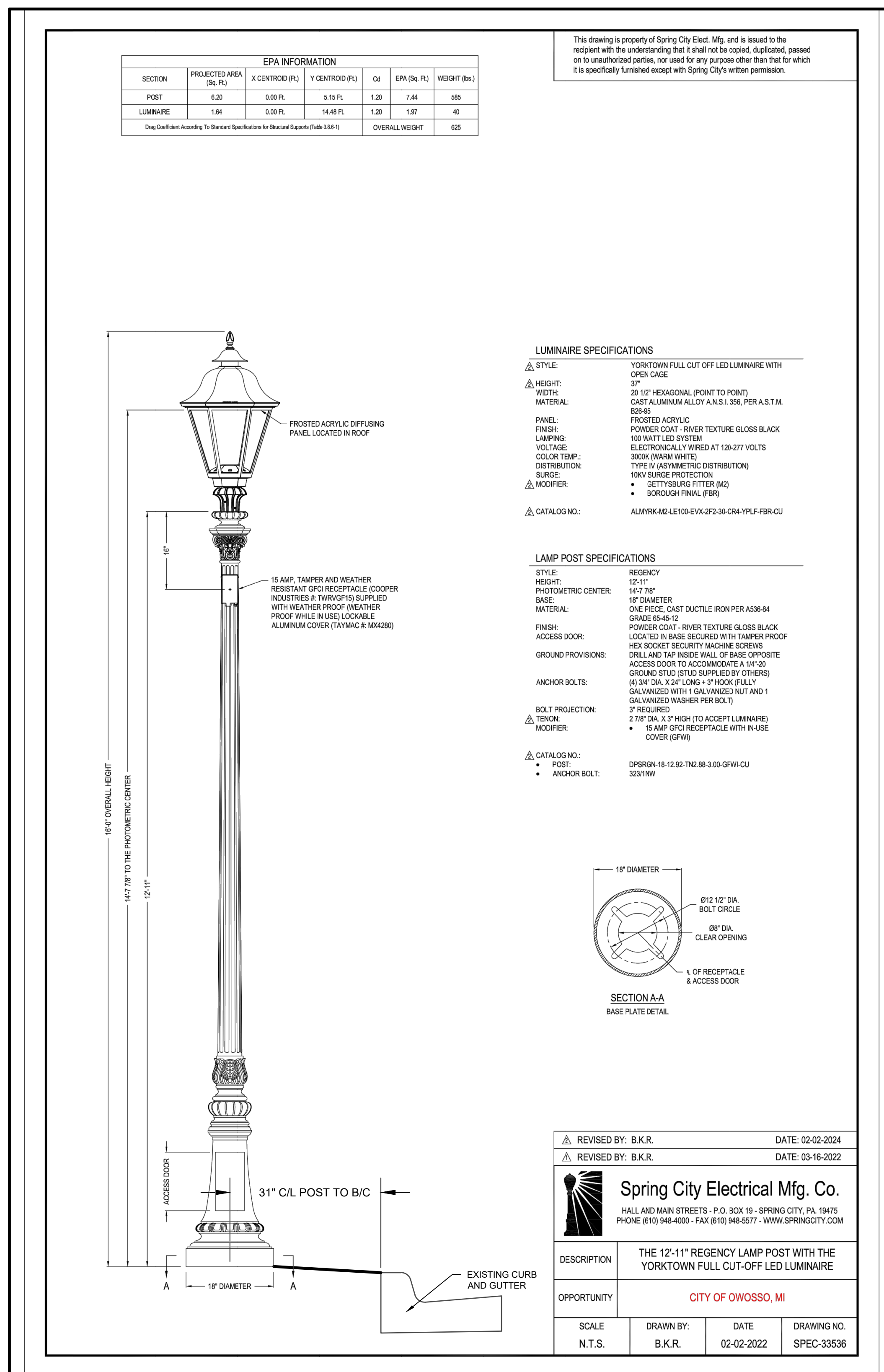
TOTAL LIGHT POLE HEIGHT	FIXTURE EPA	POST EPA	CROSS ARM EPA	FOUNDATION DEPTH "D"
17' - 3"	1.79 SQ. FT	7.44 SQ. FT	2.88 SQ. FT	5' - 0"

1 LIGHT POLE FOUNDATION
SCALE: NTS



CONTRACTOR TO USE EXTREME CAUTION WHEN EXCAVATION ACTIVITIES OCCUR TO AVOID ANY DAMAGE TO EXISTING UNDERGROUND UTILITIES, TELECOM LINES, ETC.

2 LIGHTPOLE FOUNDATION SECTION
SCALE: NTS

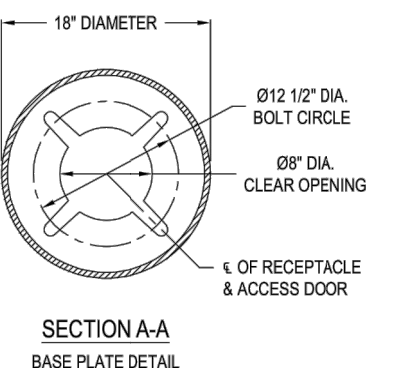


SECTION	PROJECTED AREA (Sq Ft)	X CENTROID (Ft)	Y CENTROID (Ft)	Cx	EPA (Sq Ft)	WEIGHT (lbs)
POST	6.20	0.00 Ft	5.15 Ft	1.20	7.44	585
LUMINAIRE	1.64	0.00 Ft	14.48 Ft	1.20	1.97	40
Overall Weight						625

This drawing is property of Spring City Elec. Mfg. and is issued to the recipient with the understanding that it shall not be copied, duplicated, passed on to unauthorized parties, nor used for any purpose other than that for which it is specifically furnished except with Spring City's written permission.

LUMINAIRE SPECIFICATIONS
 STYLE: YORKTOWN FULL CUT OFF LED LUMINAIRE WITH OPEN CASE
 HEIGHT: 37"
 WIDTH: 20 1/2" HEXAGONAL (POINT TO POINT)
 MATERIAL: CAST ALUMINUM ALLOY A.S.I. 356, PER A.S.T.M. B26-85
 PANEL: FROSTED ACRYLIC
 FINISH: POWDER COAT - RIVER TEXTURE GLOSS BLACK
 LAMP: 100 WATT LED SYSTEM
 VOLTAGE: ELECTRONICALLY WIRED AT 120-277 VOLTS
 COLOR TEMP.: 3000K (WARM WHITE)
 DISTRIBUTION: TYPE IV (ASYMMETRIC DISTRIBUTION)
 SURGE: 10KV SURGE PROTECTION
 MODIFIER: • GETTYSBURG FILTER (MG)
 • SPOORER FINIAL (FBR)
 CATALOG NO.: ALMYRM2LE100-EVA-2F2-30-CRA-YPL-FBR-CU

LAMP POST SPECIFICATIONS
 STYLE: REGENCY
 HEIGHT: 12'-11"
 PHOTOMETRIC CENTER: 14'-7 7/8"
 BASE: 18" DIAMETER
 MATERIAL: ONE PIECE, CAST DUCTILE IRON PER A336-84 GRADE 60-45-12
 FINISH: POWDER COAT - RIVER TEXTURE GLOSS BLACK
 ACCESS DOOR: LOCATED IN BASE SECURED WITH TAMPER PROOF HEX SOCKET SECURITY MACHINE SCREWS
 GROUND PROVISIONS: DRILL AND TAP INSIDE WALL OF BASE OPPOSITE ACCESS DOOR TO ACCOMMODATE A 1/4" 30 GROUND STUD (STUD SUPPLIED BY OTHERS)
 ANCHOR BOLTS: (4) 3/4" DIA. X 24" LONG + 3" HOOK (FULLY GALVANIZED WITH 1 GALVANIZED NUT AND 1 GALVANIZED WASHER PER BOLT)
 BOLT PROJECTION: 3" REQUIRED
 TENON: 2 7/8" DIA. X 3" HIGH (TO ACCEPT LUMINAIRE)
 MODIFIER: • 15 AMP GFCI RECEPTACLE WITH IN-USE COVER (GRW)
 CATALOG NO.: DPERGN-18-12-92-T2-88-3-00-GRW-CU
 POST: 32311WV
 ANCHOR BOLT:



REVISED BY: B.K.R. DATE: 02-02-2024
 REVISED BY: B.K.R. DATE: 03-16-2022

Spring City Electrical Mfg. Co.
 HALL AND MAIN STREETS - P.O. BOX 19 - SPRING CITY, PA. 19475
 PHONE (610) 948-4000 - FAX (610) 948-8577 - WWW.SPRINGCITYMFG.COM

DESCRIPTION: THE 12'-11" REGENCY LAMP POST WITH THE YORKTOWN FULL CUT-OFF LED LUMINAIRE
 OPPORTUNITY: CITY OF OWOSSO, MI
 SCALE: N.T.S. DRAWN BY: B.K.R. DATE: 02-02-2022 DRAWING NO.: SPEC-35356

THE CITY OF OWOSSO WILL PURCHASE THE LIGHT STANDARD (SHAFT, LUMINAIRE, HARDWARE, ETC.). CONTRACTOR TO PICK UP LIGHT STANDARDS FROM OWOSSO DEPARTMENT OF PUBLIC WORKS AT 522 MILWAUKEE STREET, TRANSPORT LIGHT STANDARDS TO WORK SITE, AND INSTALL.
 INSTALLATION COST SHALL INCLUDE ALL NECESSARY WIRING FOR THE LUMINAIRE AND RECEPTACLE.

3 LIGHT STANDARD DETAIL
SCALE: NTS

CITY OF OWOSSO, MICHIGAN
 ENGINEERING DIVISION
 DEPT. OF PUBLIC SERVICE

2024 STREET LIGHT PROJECT

REVISIONS

NO.	DATE	BY	CW
1	2/19/24		

NO. 1 I/FB PLANS

DESCRIPTION

ELEV.

APPROVED BY

CHECKED BY

ORIGINAL PLAN

FIELD BOOK PG.

JANUARY, 2023 PROJECT NO.

D2

THE CONTRACTOR SHALL BE RESPONSIBLE FOR COORDINATING ALL WORK WITH THE LOCAL ELECTRIC UTILITY (CONSUMERS ENERGY) AND OBTAINING ALL NECESSARY ELECTRIC PERMITS FROM THE OWOSSO BUILDING DEPARTMENT.

GENERAL NOTES

UNDERGROUND UTILITIES/MISS DIG
 FOR PROTECTION OF UNDERGROUND UTILITIES AND IN CONFORMANCE WITH PUBLIC ACT 174, 2013, THE CONTRACTOR SHALL DIAL 1-800-482-7171 FOR A MINIMUM OF THREE FULL WORKING DAYS, EXCLUDING SATURDAYS, SUNDAYS, AND HOLIDAYS, PRIOR TO BEGINNING EACH EXCAVATION IN AREAS WHERE PUBLIC UTILITIES HAVE NOT BEEN PREVIOUSLY LOCATED. MEMBER WILL THUS BE ROUTINELY NOTIFIED. THIS DOES NOT RELIEVE THE CONTRACTOR OF THE RESPONSIBILITY OF NOTIFYING UTILITY OWNERS WHO MAY NOT BE A PART OF THE "MISS DIG" ALERT SYSTEM.

THE EXISTING UTILITIES ON THESE DRAWINGS HAVE BEEN SHOWN ACCORDING TO THE BEST AVAILABLE INFORMATION. CONTRACTOR SHALL FIELD LOCATE ALL UTILITIES PRIOR TO BEGINNING CONSTRUCTION AND SHALL NOTIFY THE ENGINEER AS TO WHERE POSSIBLE CONFLICT EXIST.

EXISTING WATER MAINS AND SEWERS
 THE CONTRACTOR SHALL BE RESPONSIBLE FOR DAMAGE TO PROPERLY IDENTIFIED EXISTING WATER MAINS, SERVICE LINES, AND / OR EXISTING SEWERS DURING THE CONSTRUCTION OF THE PROJECT.

ADJUSTING OF MONUMENT BOXES
 ALL GOVERNMENT CORNERS ON THIS PROJECT SHALL BE PRESERVED, WHETHER SHOWN OR NOT. IT MAY BE NECESSARY TO PLACE OR ADJUST MONUMENT BOXES AS REQUIRED.

PAVEMENT MARKINGS AND SIGNS
 ALL PERMANENT PAVEMENT MARKINGS, SHAPES, AND DIMENSIONS SHALL CONFORM WITH MDOT PAVEMENT MARKING TYPICALS PAVE - 900 SERIES.

SOIL EROSION MEASURES
 APPROPRIATE SOIL EROSION AND SEDIMENTATION CONTROL MEASURES SHALL BE IN PLACE PRIOR TO EARTH DISTURBING ACTIVITIES. PLACE LAWN RESTORATION ITEMS AS SOON AS POSSIBLE ON POTENTIAL ERODIBLE SLOPES AS DIRECTED BY THE ENGINEER. CRITICAL DITCH GRADES SHALL BE PROTECTED WITH EITHER SOD OR SEED / MULCH BLANKET AS DIRECTED BY THE ENGINEER.

SOIL EROSION AND SEDIMENTATION CONTROL MEASURES
 IT IS THE RESPONSIBILITY OF THE CONTRACTOR TO ENSURE THAT SOIL EROSION AND SEDIMENTATION CONTROL MEASURES ARE IN PLACE AND MAINTAINED UNTIL THE CONTRACT HAS BEEN COMPLETED AND ACCEPTED. MEASURES SHALL ONLY BE PAID FOR ONCE.

RUBBISH DISPOSAL
 SEE MAINTAINING TRAFFIC SPECIAL PROVISIONS.

MAIL DELIVERY
 SEE MAINTAINING TRAFFIC SPECIAL PROVISIONS.

CURB AND GUTTER
 ALL NEW SECTIONS OF CURB AND GUTTER SHALL BE TIED TO EXISTING CURB AND GUTTER ON BOTH ENDS USING EPOXY COATED #4 BARS.

SIDEWALK RAMPS AND SIDEWALKS
 SIDEWALK RAMPS SHALL BE COMPLETED IN ACCORDANCE WITH THE MDOT STANDARD SPECIFICATIONS FOR CONSTRUCTION AND MDOT STANDARD PLAN R-28 SERIES, EXCEPT AS MODIFIED HEREIN. THE PORTION OF RAMP FROM THE CURB AND GUTTER TO THE LANDING SHALL BE 7-INCHES THICK AS IDENTIFIED ON THE SIDEWALK RAMP THICKNESS DETAIL. THE LANDING SHALL BE 4-INCHES THICK. THE PAY ITEMS FOR Curb Ramp, Conc. 7 inch AND Sidewalk, Conc. 7 inch SHALL INCLUDE ALL EXCAVATION AND EMBANKMENT NECESSARY TO CONSTRUCT EACH ITEM AND ALL WORK NECESSARY TO SAW AND TRIM EDGES OF EXISTING CONCRETE. EXCAVATION AND EMBANKMENT WILL NOT BE PAID FOR SEPARATELY.

DETECTIBLE WARNING SURFACES SHALL BE EAST JORDAN DURALAST TM AND RED IN COLOR, INSTALLED ONTO FRESH CONCRETE, AND IN ACCORDANCE WITH MDOT STANDARD R-28 SERIES. THE WARNING SURFACES SHALL BE 2.5 FEET IN LENGTH SUCH THAT TWO PLATES ARE USED FOR EACH 5 FOOT WIDE RAMP.

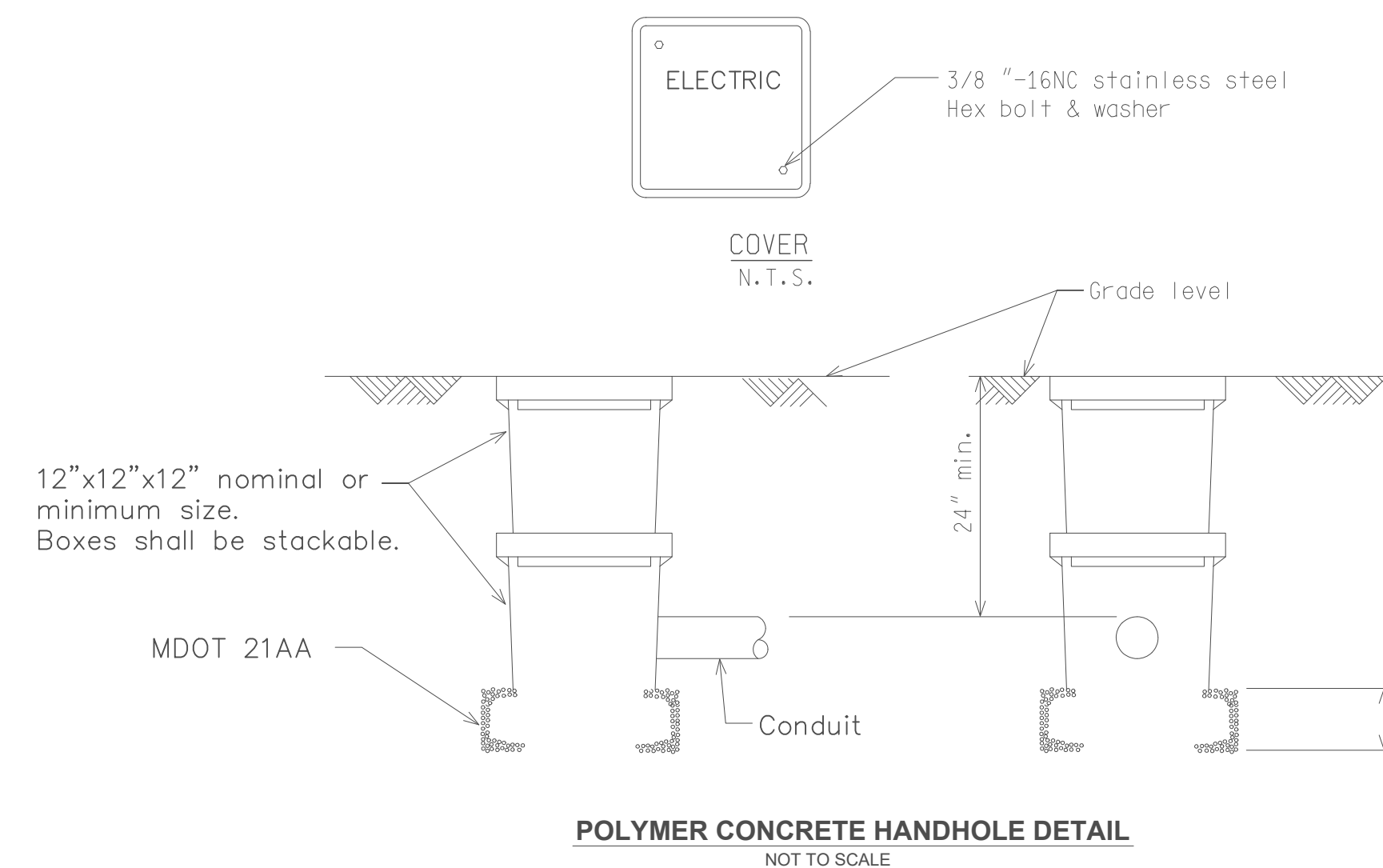
SIDEWALKS LOCATED WITHIN RESIDENTIAL DRIVEWAYS SHALL BE 6-INCHES THICK AND WILL BE PAID FOR AS Sidewalk, Conc, 6 inch.

SIDEWALKS LOCATED WITHIN COMMERCIAL DRIVEWAYS SHALL BE 7-INCHES THICK AND WILL BE PAID FOR AS Sidewalk, Conc, 7 inch.

LAWN SPRINKLERS / LANDSCAPING
 OWNERS OF EXISTING LAWN SPRINKLER SYSTEMS AND / OR LANDSCAPING SHALL BE NOTIFIED (IN WRITING WITH A COPY SENT TO THE ENGINEER) BY THE CONTRACTOR TWO WEEKS IN ADVANCE OF ANY WORK THAT WILL BE DONE THAT WILL AFFECT THOSE SYSTEMS AND / OR LANDSCAPING. IF THE PROPERTY OWNER FAILS TO RELOCATE THE LAWN SPRINKLER SYSTEM PRIOR TO THE CONTRACTOR BEGINNING WORK, AND IF THE CONTRACTOR CUTS THE SYSTEM DURING CONSTRUCTION, THE CONTRACTOR SHALL CAP THE SYSTEM PIPE AND WITNESS THE LOCATION OF THE CAP WITH A WOODEN STAKE FOR THE PROPERTY OWNERS USE. THE CONTRACTOR SHALL PLACE THE SALVAGED SPRINKLER HEADS ON THE BACK OF THE RIGHT OF WAY. IF THE PROPERTY OWNER FAILS TO RELOCATE THE LANDSCAPING PRIOR TO THE CONTRACTOR BEGINNING WORK, THE CONTRACTOR SHALL CAREFULLY SALVAGE THE LANDSCAPING ITEMS AND STOCKPILE THEM ON THE BACK OF THE RIGHT OF WAY OR AT A LOCATION DESIGNATED BY THE ENGINEER FOR THE PROPERTY OWNER. ANY OTHER MODIFICATION TO THE SPRINKLER SYSTEM AND / OR LANDSCAPING IS THE RESPONSIBILITY OF THE OWNER AND IS NOT PART OF THIS CONTRACT. THIS WORK WILL NOT BE PAID FOR SEPARATELY.

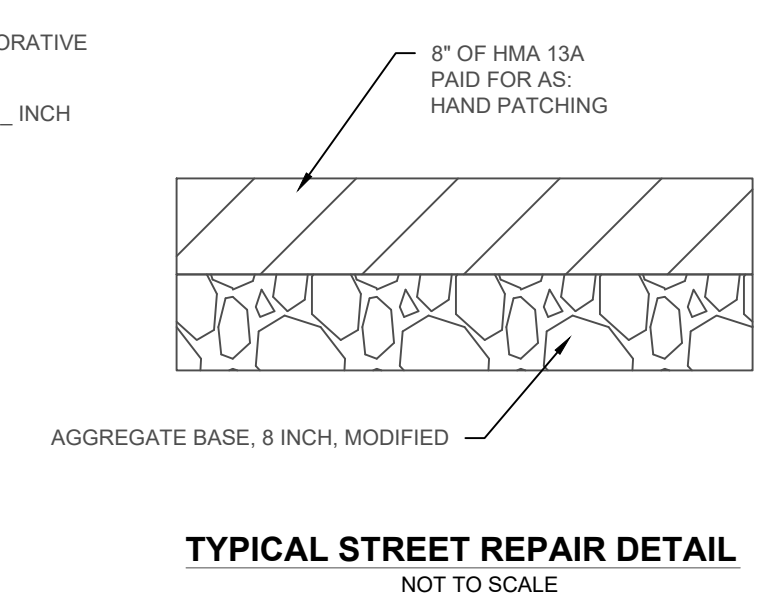
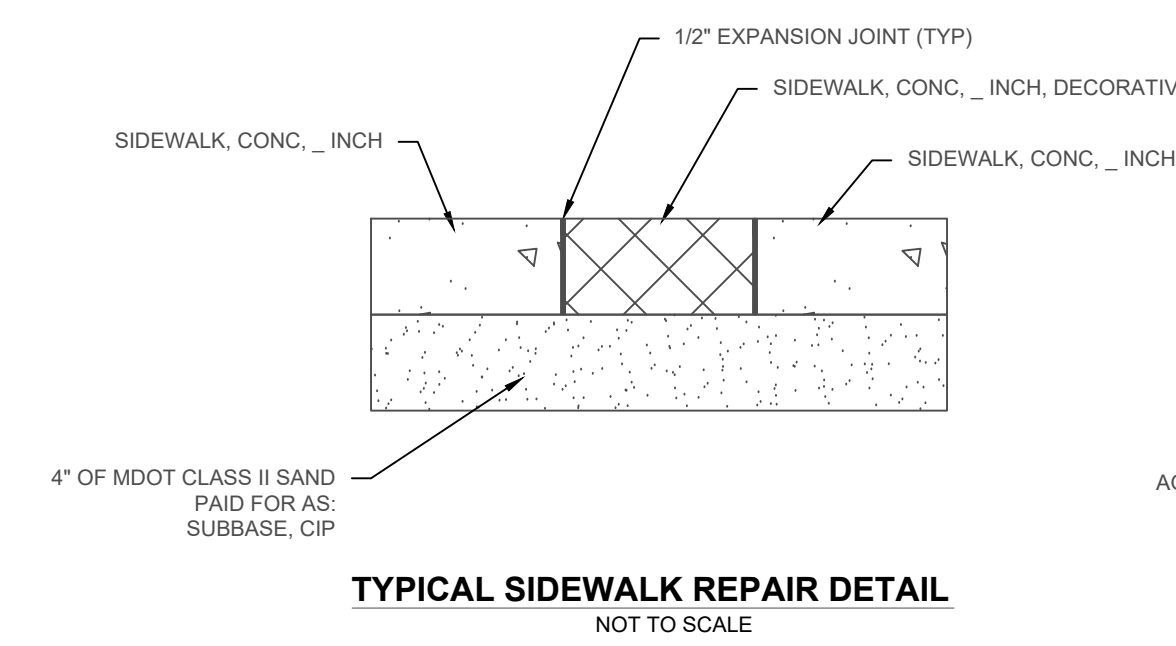
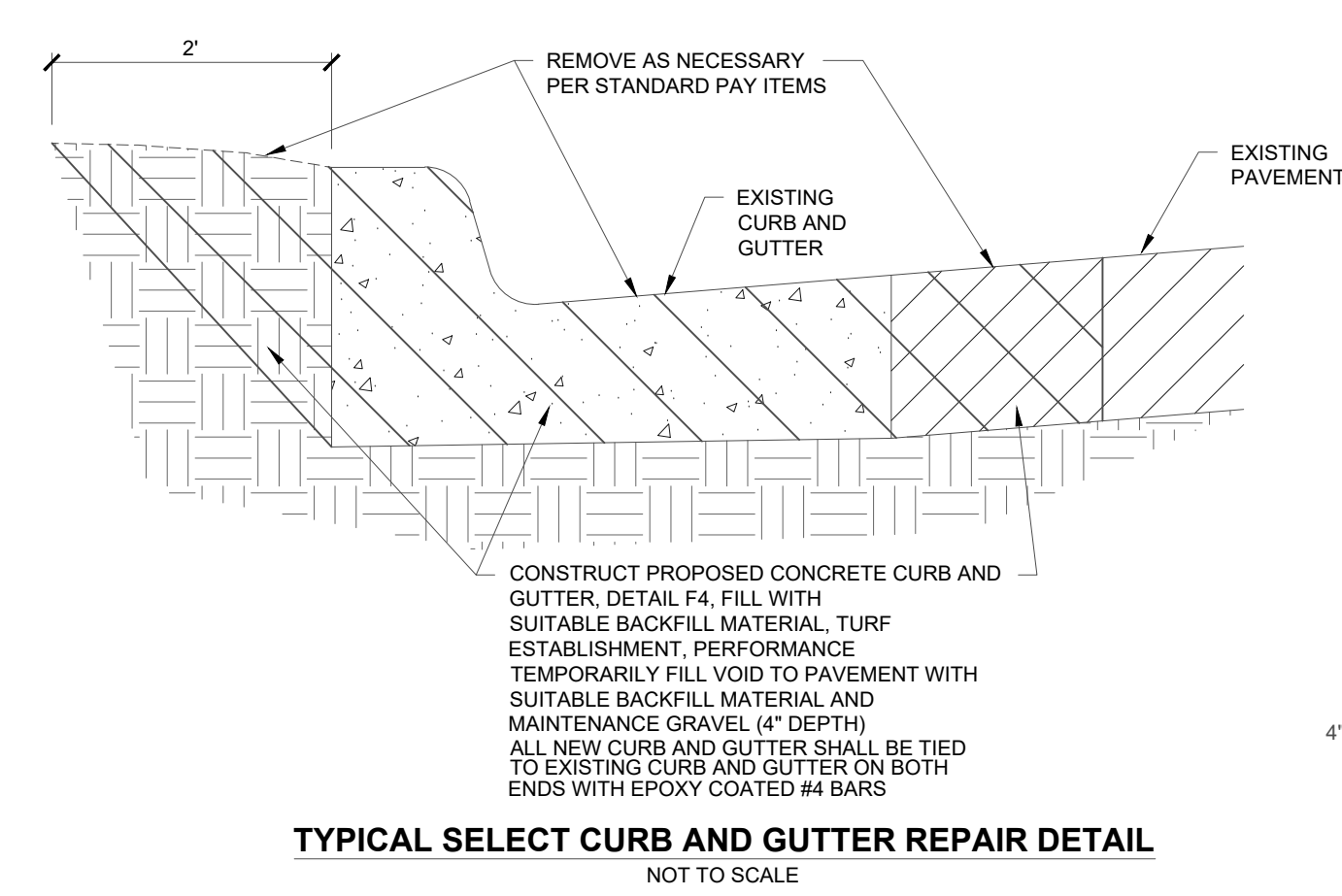
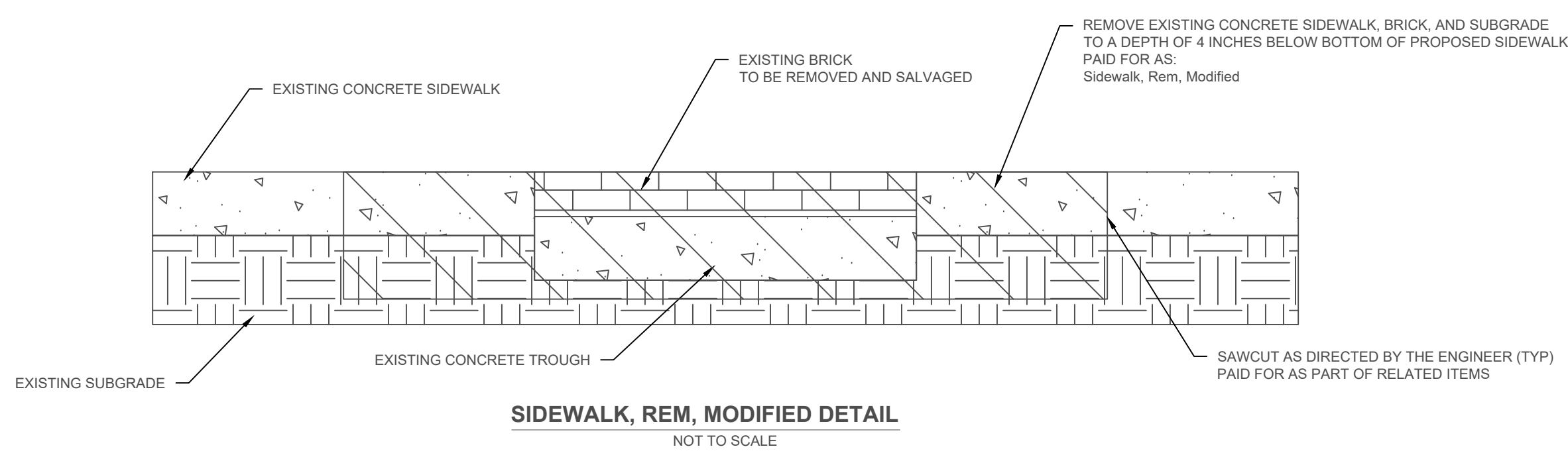
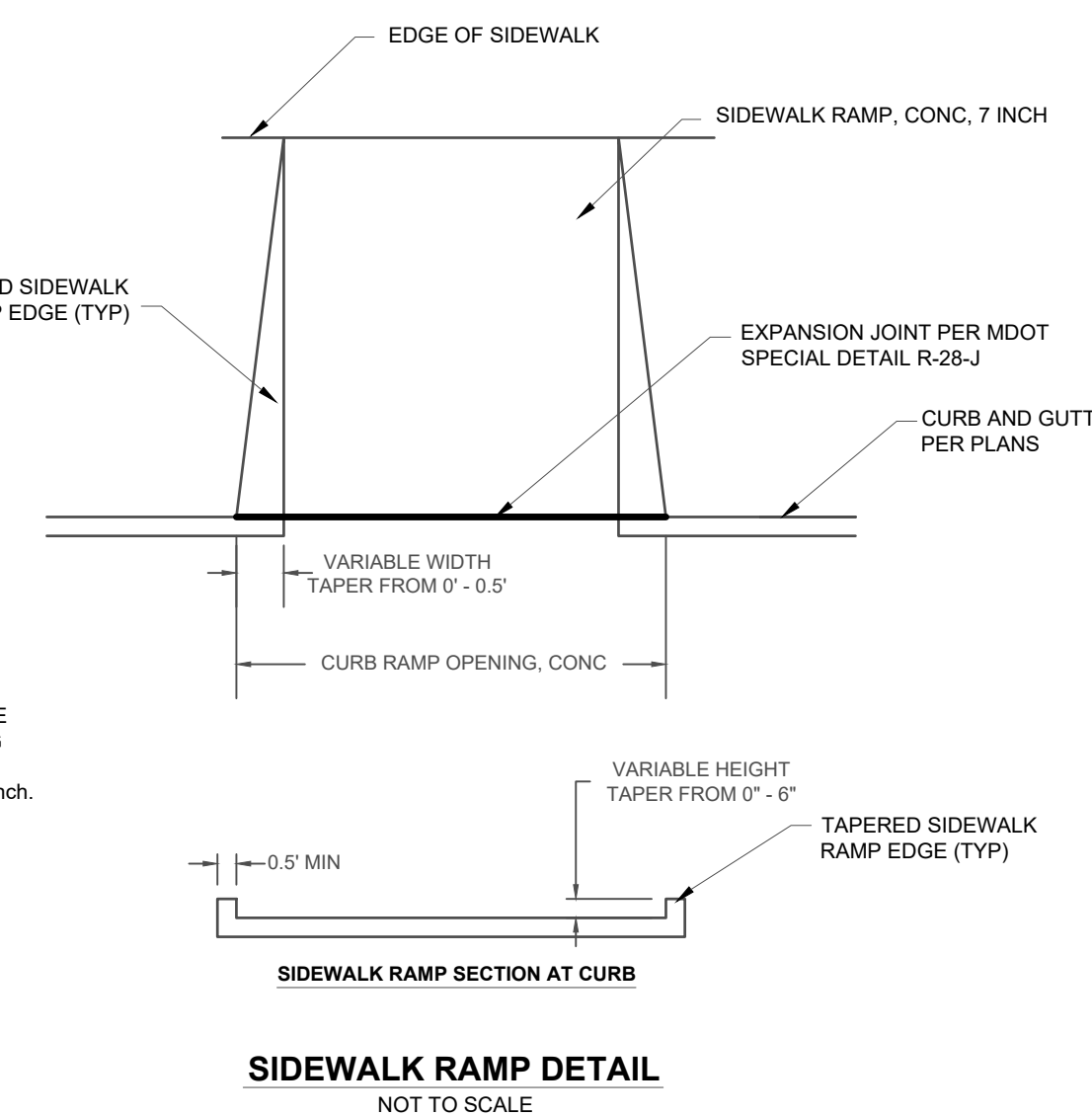
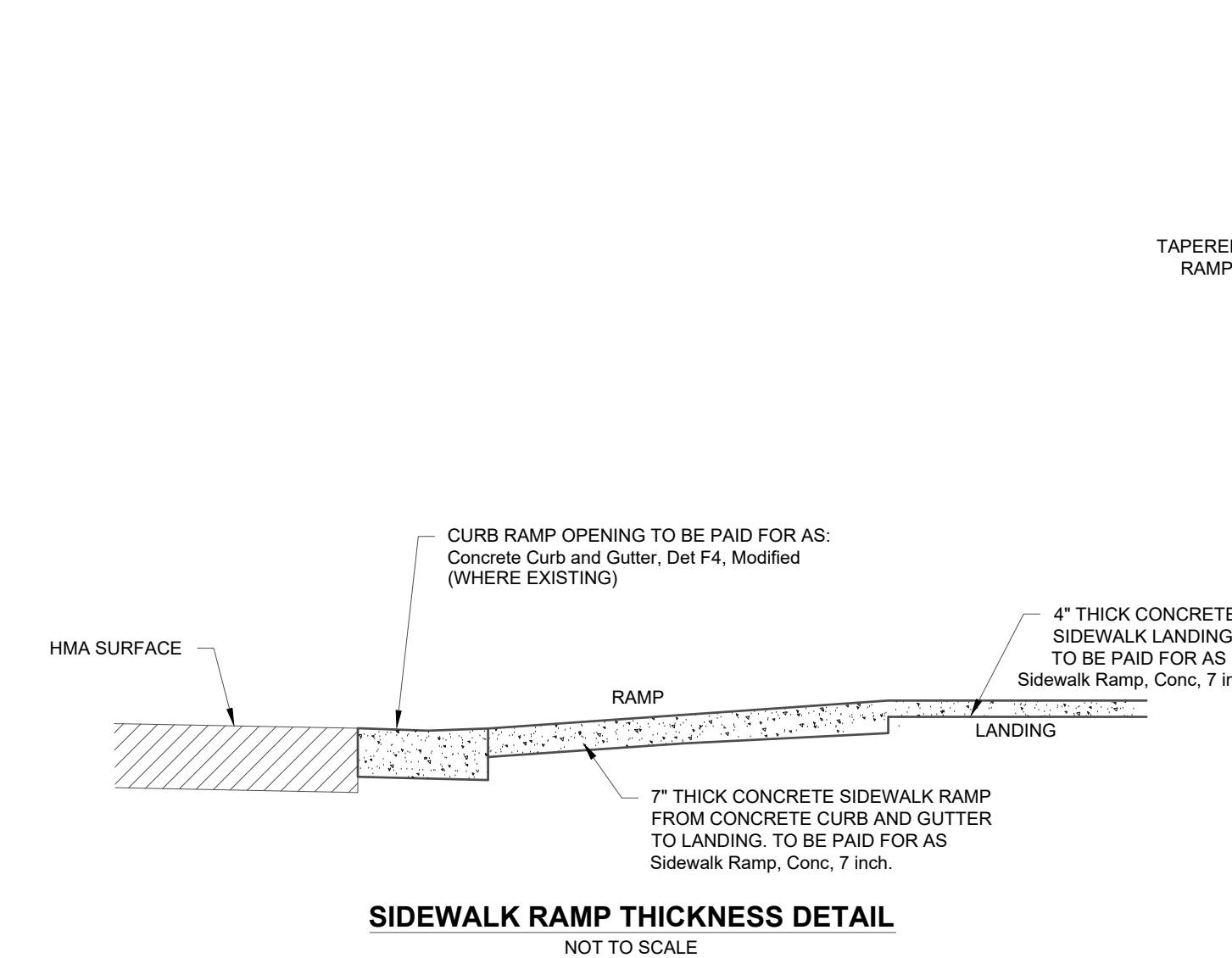
PROPERTY OWNERS
 PROPERTY OWNERS' NAMES, WHERE SHOWN, ARE FOR INFORMATION ONLY, AND THEIR ACCURACY IS NOT GUARANTEED.

MAINTAINING TRAFFIC
 REFER TO THE CONTRACT SPECIAL PROVISION FOR WORK RESTRICTIONS RELATIVE TO MAINTAINING TRAFFIC.

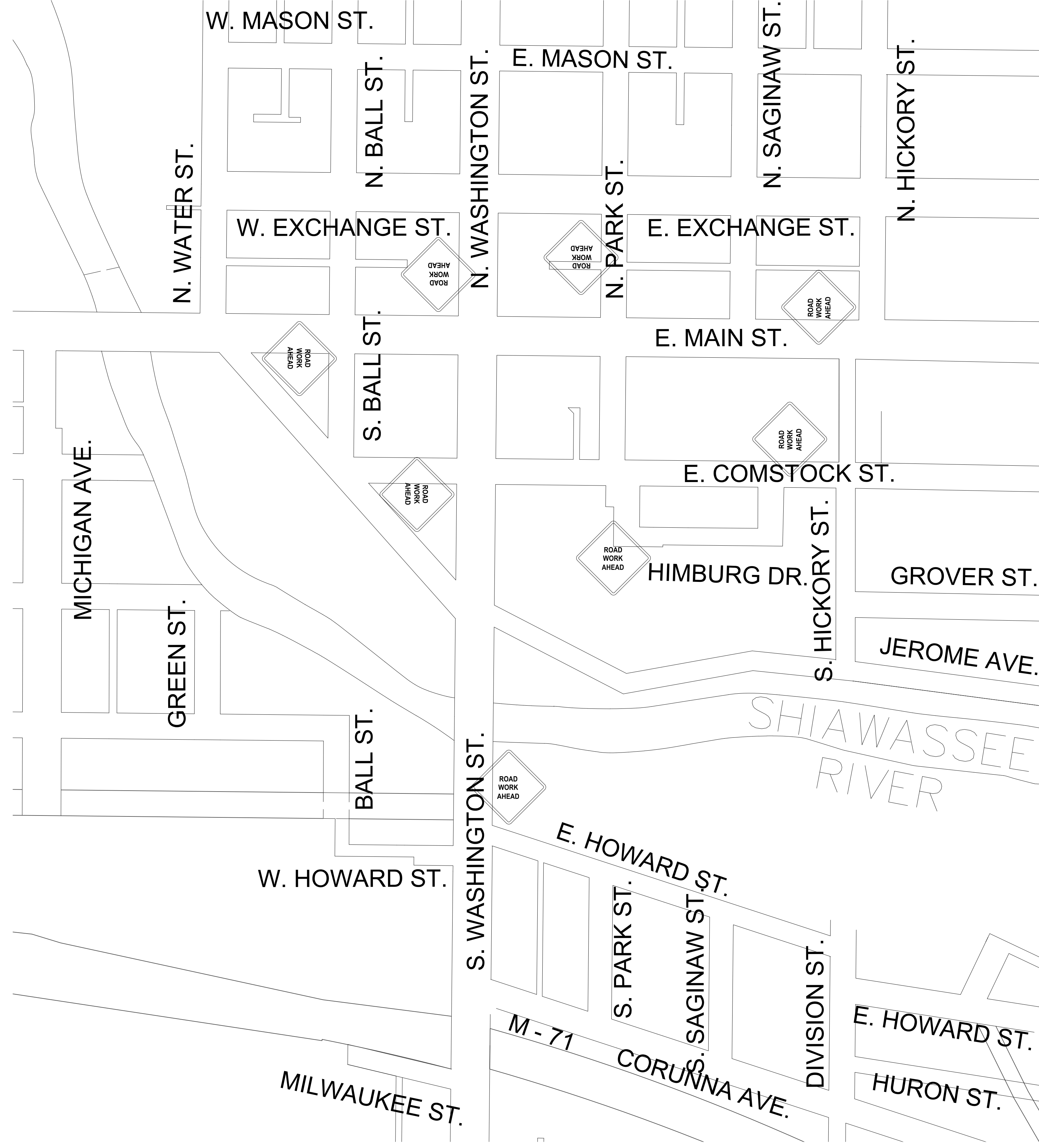
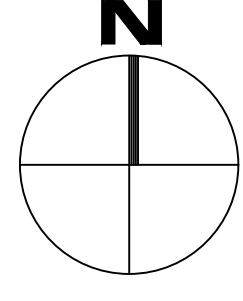


NOTES:

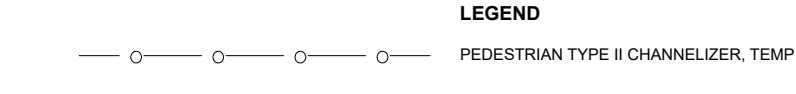
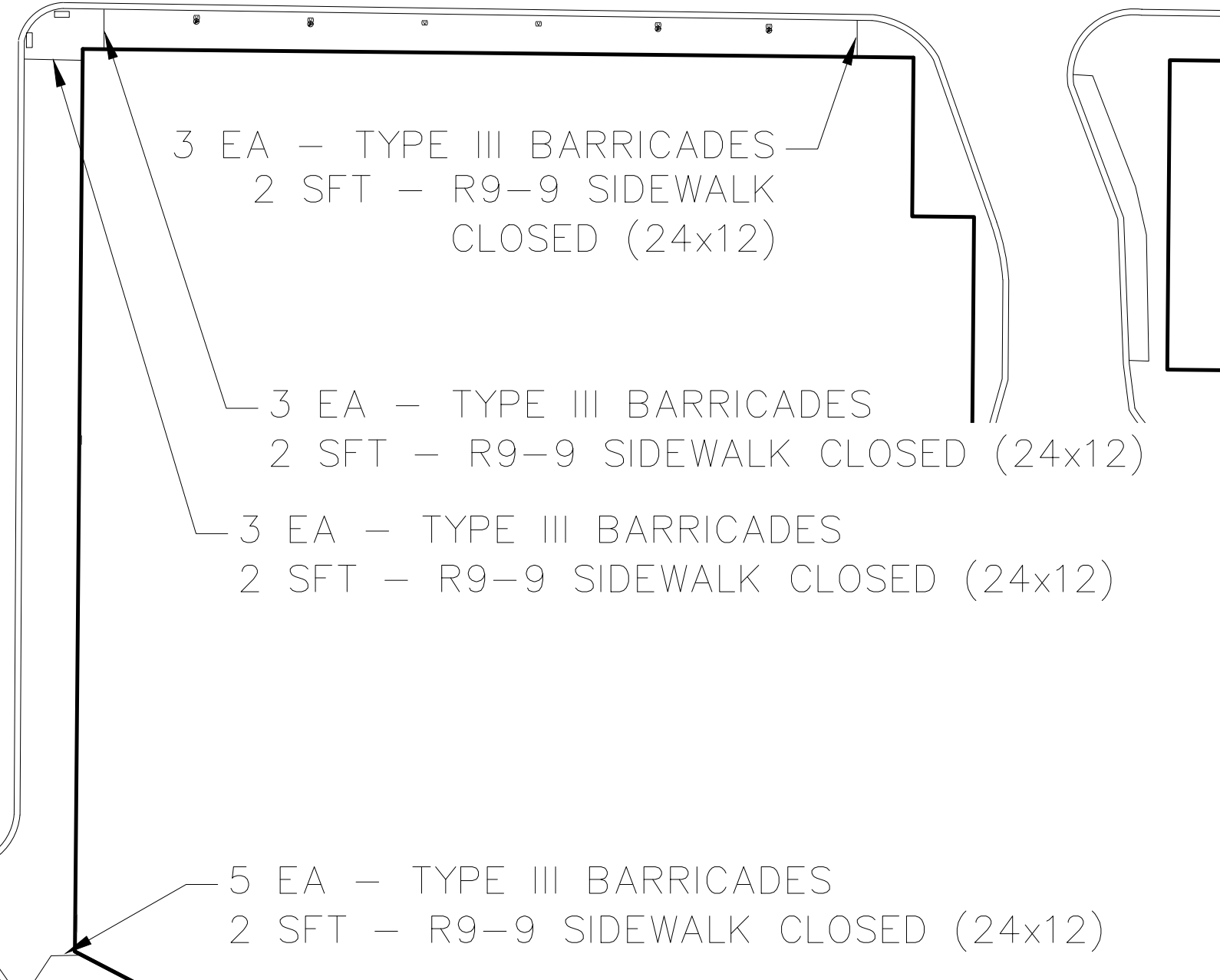
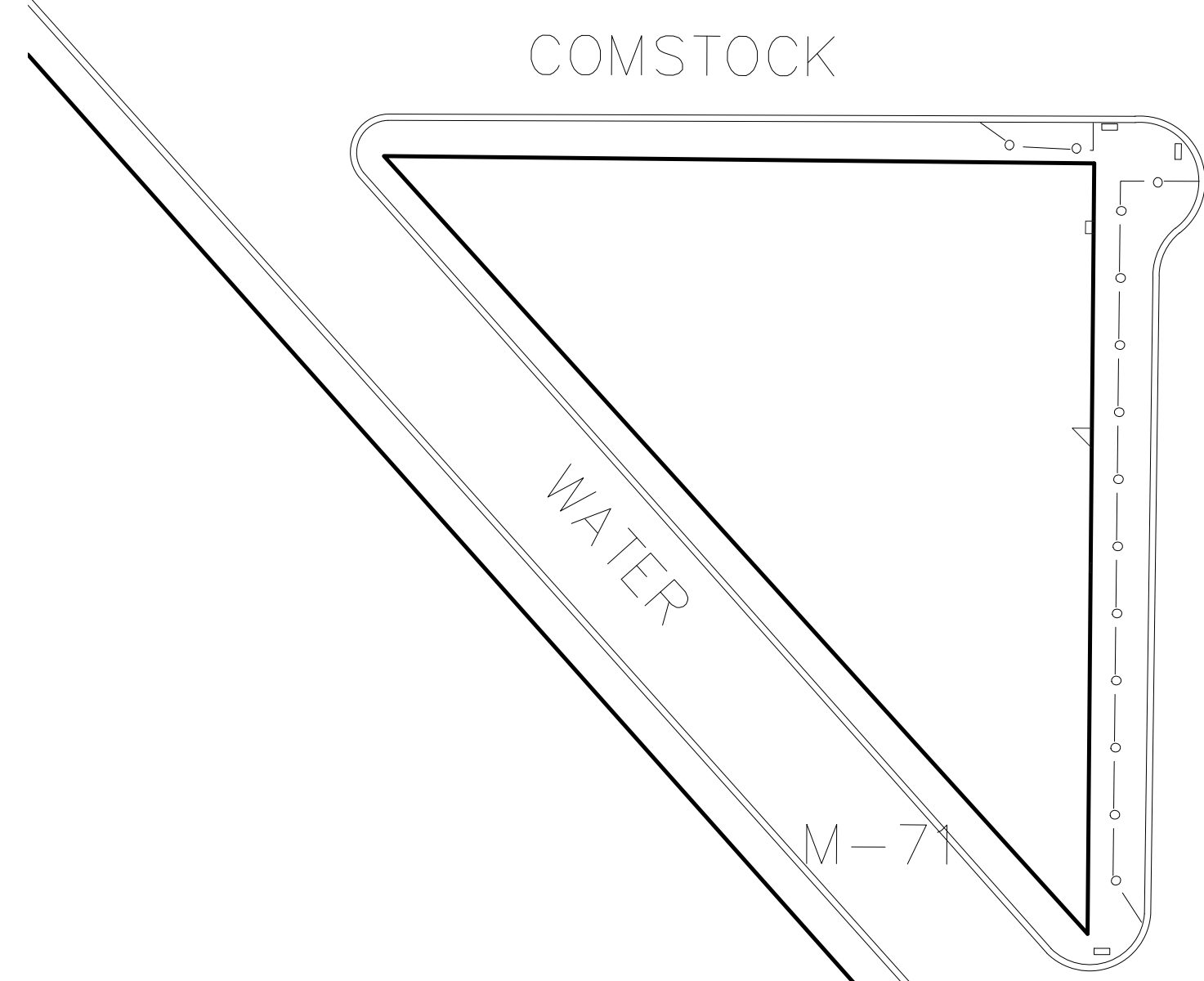
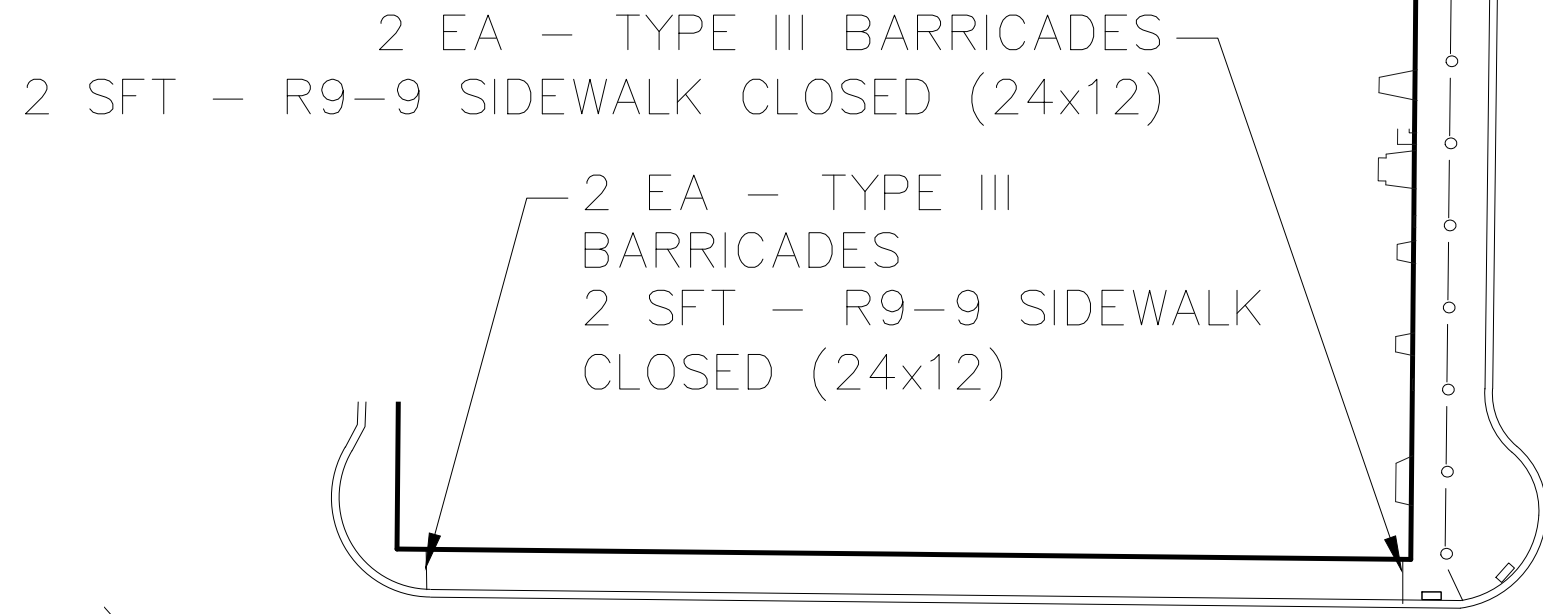
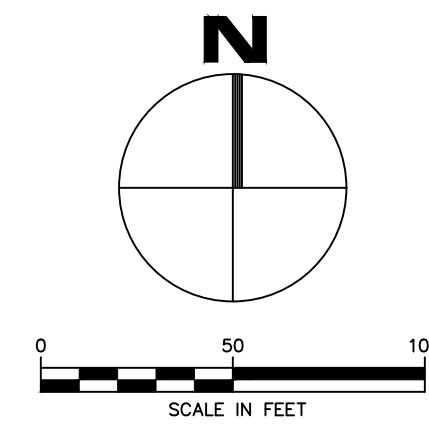
1. THE INNER SURFACE OF THE HANDHOLE SHALL BE SMOOTH
2. HANDHOLE AND COVER SHALL BE TIER 22
3. THE SEATING FACE OF THE COVER AND THE SEAT ON THE FRAME SHALL HAVE AN EVEN BEARING TO PREVENT ROCKING OR TILTING.
4. THE HANDHOLES SHALL BE FREE OF POURING FAULTS, BLOW HOLES, CRACKS, AND OTHER IMPERFECTIONS. THEY SHALL BE SOUND, TRUE TO FORM AND THICKNESS, CLEAN, AND NEATLY FINISHED.
5. THE COVER SHALL BE BOLTED TO FRAME WITH NOT LESS THAN 2 COUNTERSUNK HEX HEAD STAINLESS STEEL BOLTS.
6. THE COVER SHALL BE MARKED "ELECTRIC"
7. EACH LOCATION OF HANDHOLE INSTALLATION SHALL BE PAID FOR AS 1 EACH, INDEPENDENT OF THE NUMBER OF STACKABLE BOXES USED.



CITY OF OWOSSO, MICHIGAN ENGINEERING DIVISION DEPT. OF PUBLIC SERVICE		NO.	DATE	BY	CHECKED BY APPROVED BY
		1	2/19/24	CW	
BENCH MARK DATA ELEV.		NO.	DATE	BY	CHECKED BY APPROVED BY
		1		CW	
2024 STREET LIGHT PROJECT STREET & SIDEWALK ITEMS GENERAL NOTES & DETAILS		NO.	DATE	BY	CHECKED BY APPROVED BY
		1		CW	
JANUARY, 2023 PROJECT NO.		FIELD BOOK PG.		D3	



SIGNING REQUIREMENTS					
NO.	SIGN	SIGN DESIGNATION	SIZE	NO. REQ.	TOTAL AREA (SFT)
1		W20-1	48 x 48	8	128

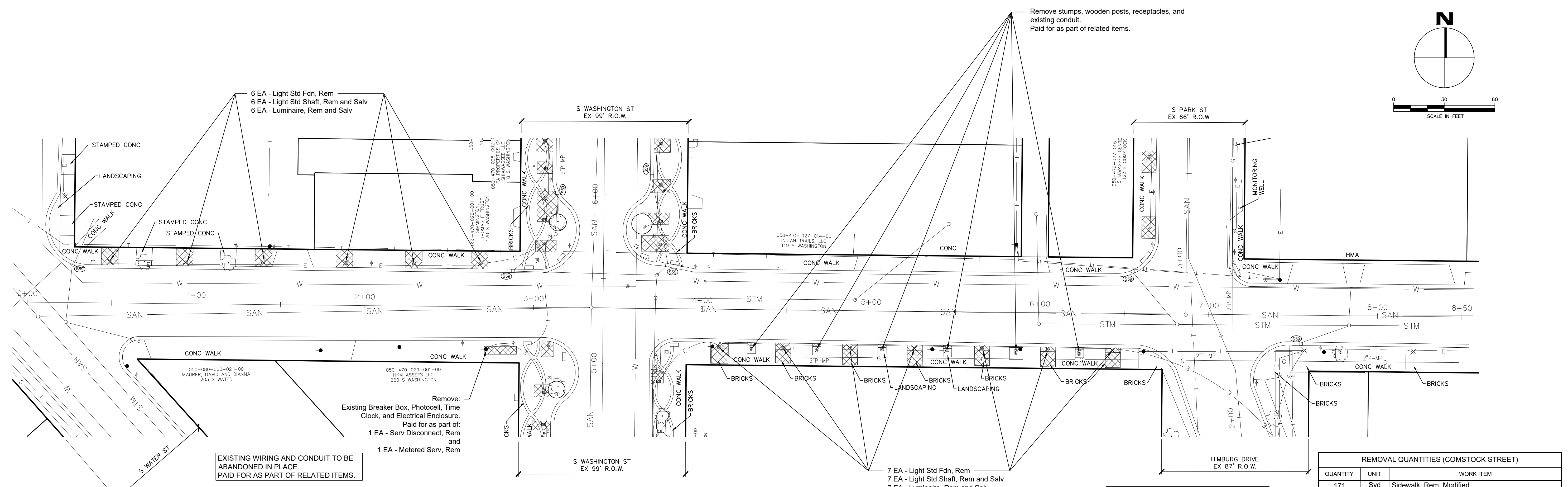
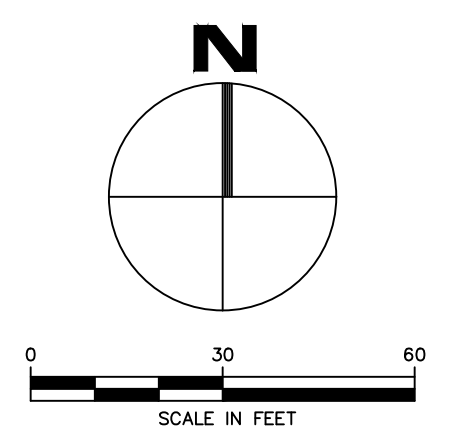


MAINTAINING PEDESTRIAN TRAFFIC QUANTITIES		
QUANTITY	UNIT	WORK ITEM
18	Ea	Barricade, Type III, High Intensity, Double Sided, Furn & Oper
1500	Ft	Pedestrian Type II Channelizer, Temp
12	Sft	Sign, Type B, Temp, Prismatic, Furn & Oper

MAINTAINING PEDESTRIAN TRAFFIC PLAN

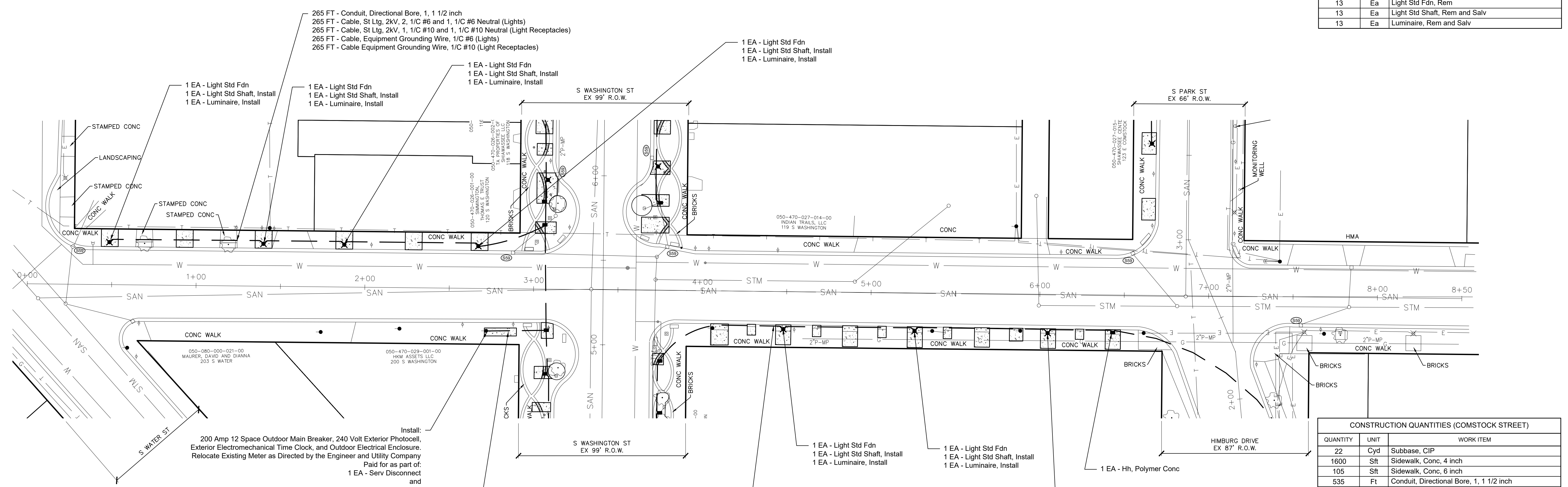
NO.	IFB PLANS	REVISIONS	DATE	BY
			2/19/24	CW
1				

CHECKED BY: ORIGINAL PLAN APPROVED BY:



COMSTOCK STREET
REMOVAL PLAN

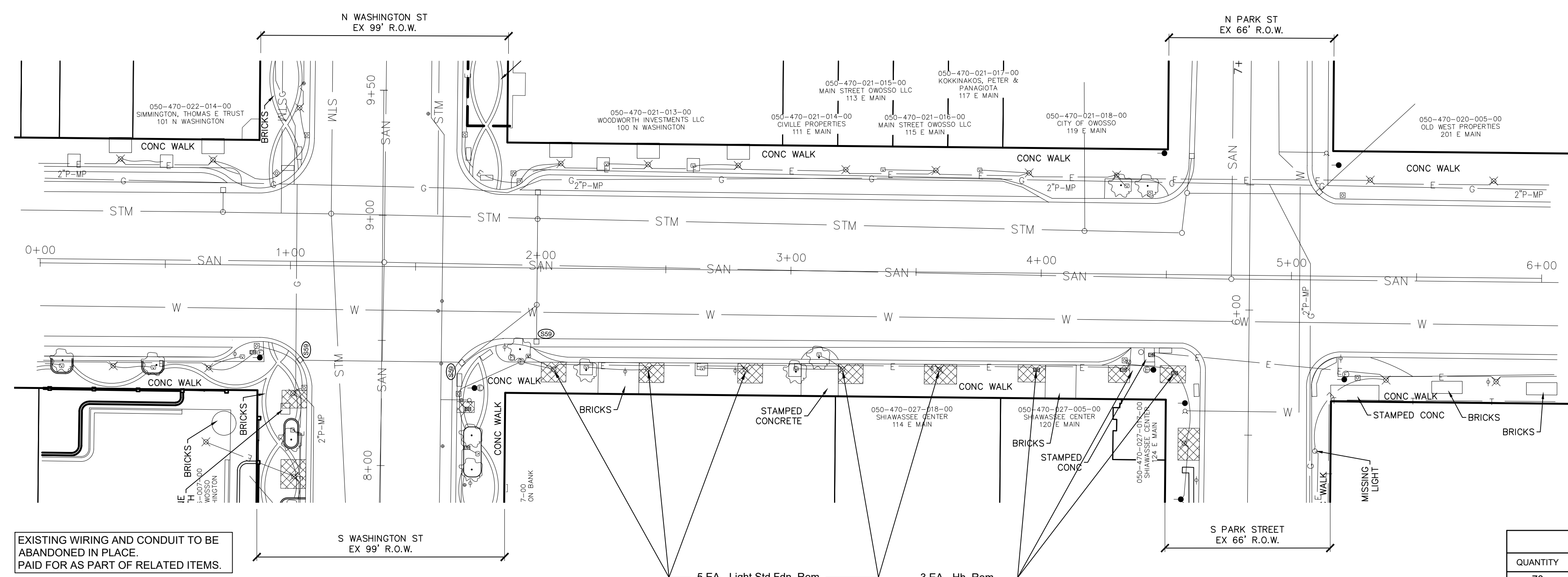
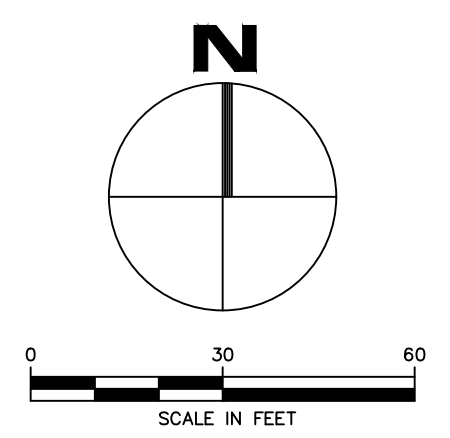
REMOVAL QUANTITIES (COMSTOCK STREET)		
QUANTITY	UNIT	WORK ITEM
171	Syd	Sidewalk, Rem, Modified
5	Ea	Erosion Control, Inlet Protection, Fabric Drop
1	Ea	Serv Disconnect, Rem
1	Ea	Metered Serv, Rem
13	Ea	Light Std Fdn, Rem
13	Ea	Luminaire, Rem and Salv



COMSTOCK STREET
CONSTRUCTION PLAN

CONSTRUCTION QUANTITIES (COMSTOCK STREET)		
QUANTITY	UNIT	WORK ITEM
22	Cyd	Subbase, CIP
1600	Sft	Sidewalk, Conc. 4 inch
105	Sft	Sidewalk, Conc. 6 inch
535	Ft	Conduit, Directional Bore, 1, 1 1/2 inch
35	Ft	Conduit, Directional Bore, 2, 1 1/2 inch
605	Ft	Cable St Ltg, 2kV, 2, 1/C #6 and 1, 1/C #6 Neutral
605	Ft	Cable St Ltg, 2kV, 1, 1/C #10 and 1, 1/C #10 Neutral
340	Ft	Cable St Ltg, 2kV, 1, 1/C #10 and 1, 1/C #10 Neutral
605	Ft	Cable, Equipment Grounding Wire, 1/C #6
605	Ft	Cable, Equipment Grounding Wire, 1/C #10
340	Ft	Cable, Equipment Grounding Wire, 1/C #10
1	Ea	Hh, Polymer Conc
1	Ea	Metered Serv
1	Ea	Serv Disconnect
7	Ea	Light Std Fdn
7	Ea	Light Std Shaft, Install
7	Ea	Luminaire, Install

NO.	DESCRIPTION	REVISIONS		DATE	BY
		NO.	DESCRIPTION		
1	IFB PLANS			2/19/24	CW



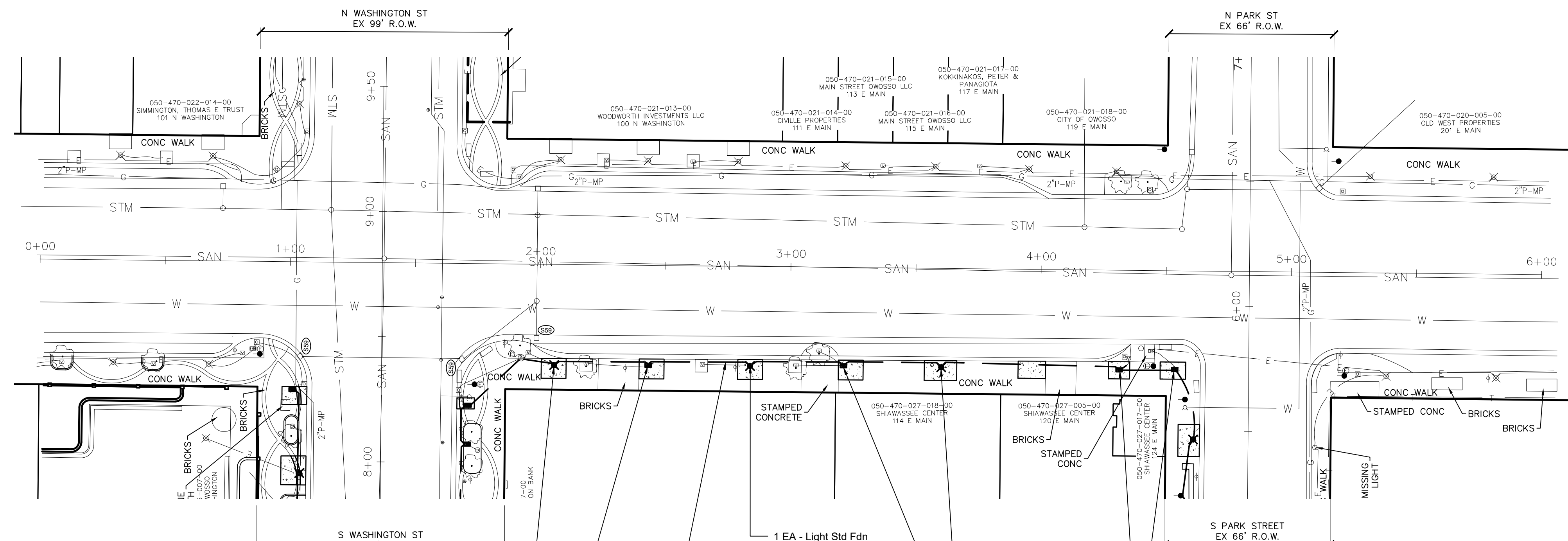
EXISTING WIRING AND CONDUIT TO BE ABANDONED IN PLACE. PAID FOR AS PART OF RELATED ITEMS.

- 5 EA - Light Std Fdn, Rem
- 5 EA - Light Std Shaft, Rem and Salv
- 5 EA - Luminaire, Rem and Salv
- 3 EA - Hh, Rem

SALVAGED LIGHT SHAFTS AND LUMINAIRES SHALL BE HAULED TO THE CITY OF OWOSSO DPW GARAGE AT 522 MILWAUKEE STREET.

REMOVAL QUANTITIES (MAIN STREET)		
QUANTITY	UNIT	WORK ITEM
70	Syd	Sidewalk, Rem, Modified
1	Ea	Erosion Control, Inlet Protection, Fabric Drop
3	Ea	Hh, Rem
5	Ea	Light Std Fdn, Rem
5	Ea	Light Std Shaft, Rem and Salv
5	Ea	Luminaire, Rem and Salv

MAIN STREET
REMOVAL PLAN



- 1 EA - Light Std Fdn
- 1 EA - Light Std Shaft, Install
- 1 EA - Luminaire, Install
- Connect existing receptacle wiring, paid for as part of related items

- 1 EA - Hh, Polymer Conc
- Connect existing receptacle wiring, paid for as part of related items

- 260 FT - Conduit, Directional Bore, 1, 1 1/2 inch
- 260 FT - Cable, St Ltg, 2kV, 2, 1/C #6 and 1, 1/C #6 Neutral (Lights)
- 260 FT - Cable, St Ltg, 2kV, 1, 1/C #10 and 1, 1/C #10 Neutral (Light Receptacles)
- 260 FT - Cable, St Ltg, 2kV, 1, 1/C #10 and 1, 1/C #10 Neutral (Ground Receptacles)
- 260 FT - Cable, Equipment Grounding Wire, 1/C #6 (Lights)
- 260 FT - Cable, Equipment Grounding Wire, 1/C #10 (Light Receptacles)
- 260 FT - Cable, Equipment Grounding Wire, 1/C #10 (Ground Receptacles)

MAIN STREET
CONSTRUCTION PLAN

- 1 EA - Light Std Fdn
- 1 EA - Light Std Shaft, Install
- 1 EA - Luminaire, Install

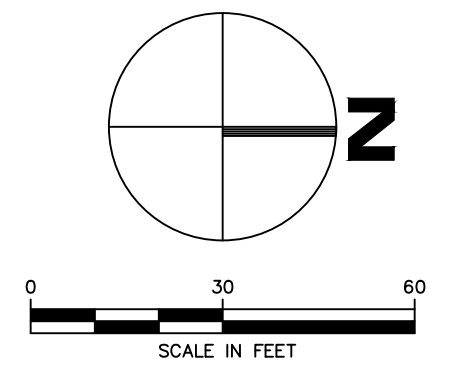
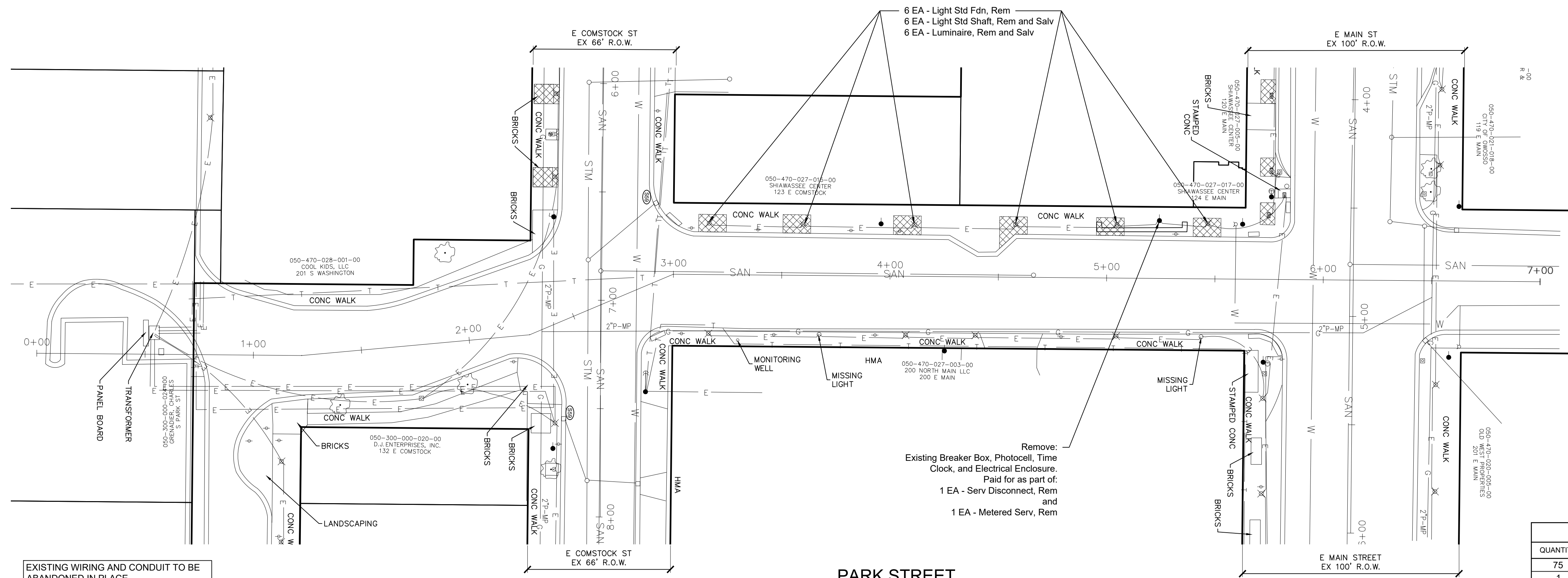
- 1 EA - Hh, Polymer Conc
- Connect existing receptacle wiring, paid for as part of related items

- 2 EA - Hh, Polymer Conc
- Connect existing wiring, paid for as part of related items

CONSTRUCTION QUANTITIES (MAIN STREET)		
QUANTITY	UNIT	WORK ITEM
8	Cyd	Subbase, CIP
620	Sft	Sidewalk, Conc, 4 inch
260	Ft	Conduit, Directional Bore, 1, 1 1/2 inch
260	Ft	Cable St Ltg, 2kV, 2, 1/C #6 and 1, 1/C #6 Neutral
260	Ft	Cable St Ltg, 2kV, 1, 1/C #10 and 1, 1/C #10 Neutral
260	Ft	Cable St Ltg, 2kV, 1, 1/C #10 and 1, 1/C #10 Neutral
260	Ft	Cable, Equipment Grounding Wire, 1/C #6
260	Ft	Cable, Equipment Grounding Wire, 1/C #10
260	Ft	Cable, Equipment Grounding Wire, 1/C #10
4	Ea	Hh, Polymer Conc
3	Ea	Light Std Fdn
3	Ea	Light Std Shaft, Install
3	Ea	Luminaire, Install

NO.	DESCRIPTION	REVISIONS	DATE	BY
1	IFB PLANS		2/19/24	CW

BENCH MARK DATA	DESCRIPTION	ELEV.



REMOVAL QUANTITIES (PARK STREET)		
QUANTITY	UNIT	WORK ITEM
75	Syd	Sidewalk, Rem, Modified
1	Ea	Serv Disconnect, Rem
1	Ea	Metered Serv, Rem
6	Ea	Light Std Fdn, Rem
6	Ea	Light Std Shaft, Rem and Salv
6	Ea	Luminaire, Rem and Salv

SALVAGED LIGHT SHAFTS AND LUMINAIRES SHALL BE HAULED TO THE CITY OF OWOSSO DPW GARAGE AT 522 MILWAUKEE STREET.

PARK STREET
REMOVAL PLAN

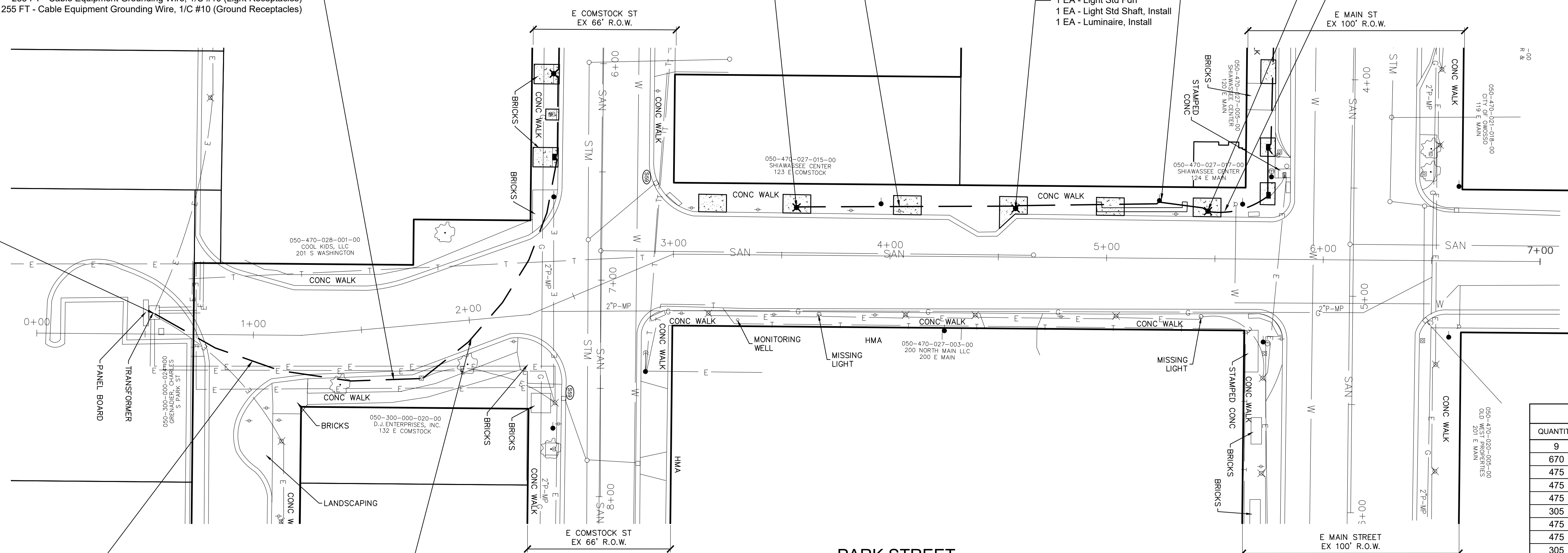
EXISTING WIRING AND CONDUIT TO BE ABANDONED IN PLACE. PAID FOR AS PART OF RELATED ITEMS.

- 255 FT - Conduit, Directional Bore, 1, 1 1/2 inch
- 255 FT - Cable, St Ltg, 2kV, 2, 1/C #6 and 1, 1/C #6 Neutral (Lights)
- 255 FT - Cable, St Ltg, 2kV, 1, 1/C #10 and 1, 1/C #10 Neutral (Light Receptacles)
- 255 FT - Cable, St Ltg, 2kV, 1, 1/C #10 and 1, 1/C #10 Neutral (Ground Receptacles)
- 255 FT - Cable, Equipment Grounding Wire, 1/C #6 (Lights)
- 255 FT - Cable Equipment Grounding Wire, 1/C #10 (Light Receptacles)
- 255 FT - Cable Equipment Grounding Wire, 1/C #10 (Ground Receptacles)

- 170 FT - Cable, St Ltg, 2kV, 2, 1/C #6 and 1, 1/C #6 Neutral (Lights)
- 170 FT - Cable, St Ltg, 2kV, 1, 1/C #10 and 1, 1/C #10 Neutral (Light Receptacles)
- 170 FT - Cable, Equipment Grounding Wire, 1/C #6 (Lights)
- 170 FT - Cable Equipment Grounding Wire, 1/C #10 (Light Receptacles)

200 Amp 12 Space Outdoor Main Breaker, 240 Volt Exterior Photocell, Exterior Electromechanical Time Clock, and Outdoor Electrical Enclosure. Relocate Existing Meter as Directed by the Engineer and Utility Company. Paid for as part of:
1 EA - Serv Disconnect and
1 EA - Metered Serv

- 50 FT - Conduit, Directional Bore, 1, 1 1/2 inch
- 50 FT - Cable, St Ltg, 2kV, 2, 1/C #6 and 1, 1/C #6 Neutral (Lights)
- 50 FT - Cable, St Ltg, 2kV, 1, 1/C #10 and 1, 1/C #10 Neutral (Light Receptacles)
- 50 FT - Cable, St Ltg, 2kV, 1, 1/C #10 and 1, 1/C #10 Neutral (Ground Receptacles)
- 50 FT - Cable, Equipment Grounding Wire, 1/C #6 (Lights)
- 50 FT - Cable Equipment Grounding Wire, 1/C #10 (Light Receptacles)
- 50 FT - Cable Equipment Grounding Wire, 1/C #10 (Ground Receptacles)



CONSTRUCTION QUANTITIES (PARK STREET)		
QUANTITY	UNIT	WORK ITEM
9	Cyd	Subbase, CIP
670	Sft	Sidewalk, Conc, 4 inch
475	Ft	Conduit, Directional Bore, 1, 1 1/2 inch
475	Ft	Cable St Ltg, 2kV, 2, 1/C #6 and 1, 1/C #6 Neutral
475	Ft	Cable St Ltg, 2kV, 1, 1/C #10 and 1, 1/C #10 Neutral
305	Ft	Cable St Ltg, 2kV, 1, 1/C #10 and 1, 1/C #10 Neutral
475	Ft	Cable, Equipment Grounding Wire, 1/C #6
475	Ft	Cable, Equipment Grounding Wire, 1/C #10
305	Ft	Cable, Equipment Grounding Wire, 1/C #10
2	Ea	Metered Serv
2	Ea	Serv Disconnect
3	Ea	Light Std Fdn
3	Ea	Light Std Shaft, Install
3	Ea	Luminaire, Install

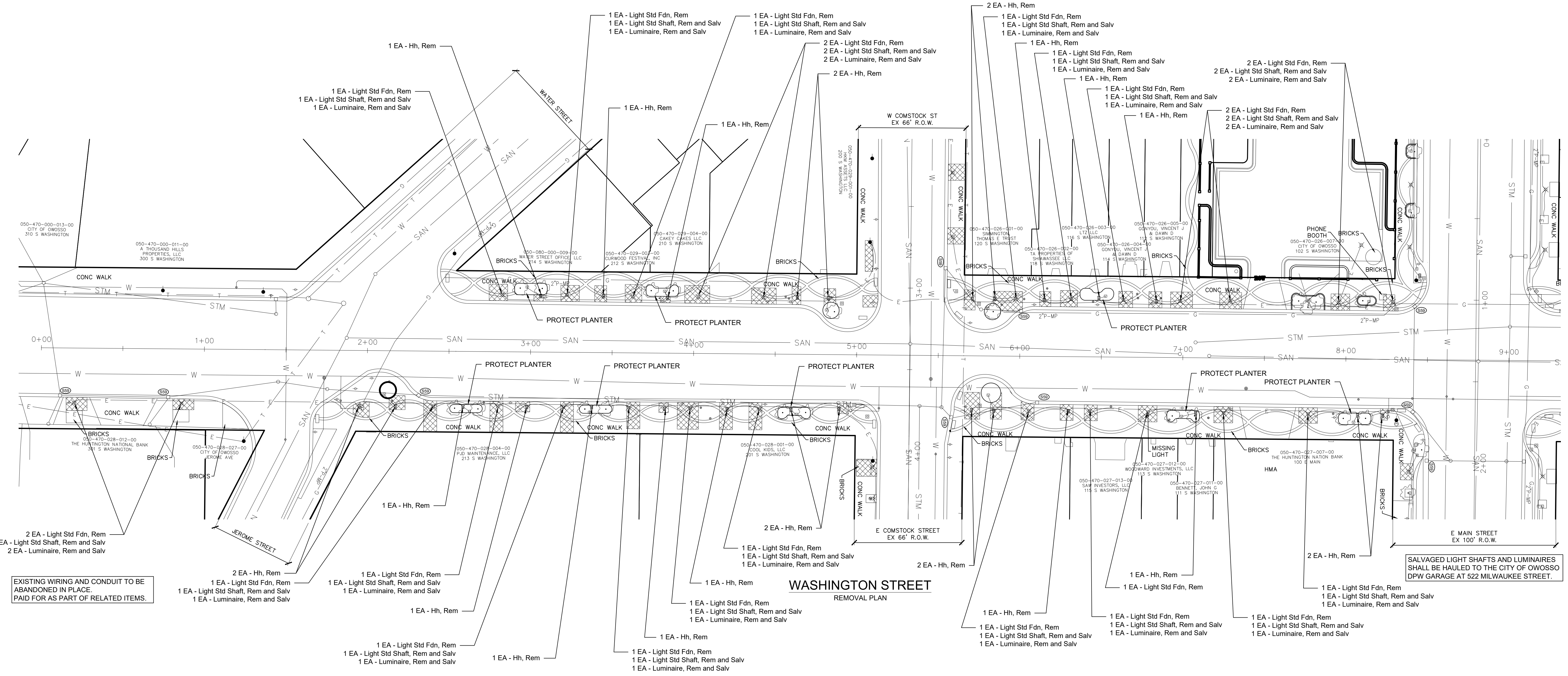
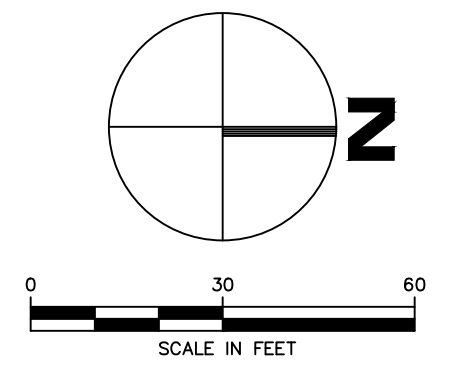
Conduit depth shall be 3' minimum under street surface.

Conduit depth shall be 3' minimum under street surface.

PARK STREET
CONSTRUCTION PLAN

NO.	DATE	BY	REVISIONS
1	2/19/24	CW	IFB PLANS

BENCH MARK DATA	DESCRIPTION
ELEV.	



EXISTING WIRING AND CONDUIT TO BE ABANDONED IN PLACE. PAID FOR AS PART OF RELATED ITEMS.

SALVAGED LIGHT SHAFTS AND LUMINAIRES SHALL BE HAULED TO THE CITY OF OWOSSO DPW GARAGE AT 522 MILWAUKEE STREET.

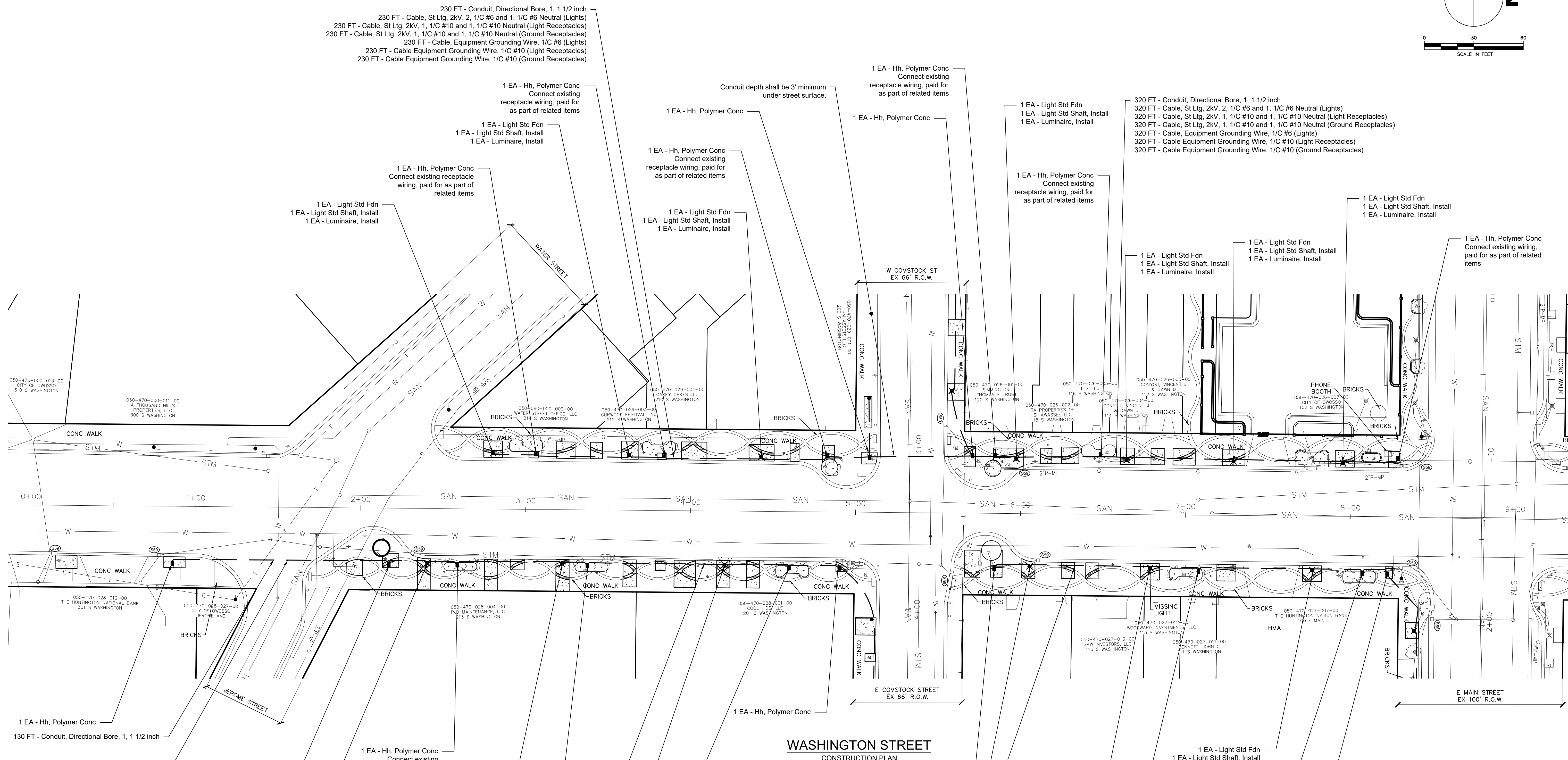
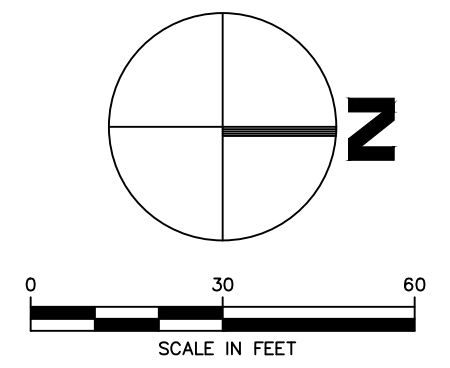
**WASHINGTON STREET
REMOVAL PLAN**

NO.	IFB PLANS	REVISIONS	DATE	BY
1			2/19/24	CW

BENCH MARK DATA	DESCRIPTION	ELEV.

REMOVAL QUANTITIES (WASHINGTON STREET)		
QUANTITY	UNIT	WORK ITEM
475	Syd	Sidewalk, Rem, Modified
7	Ea	Erosion Control, Inlet Protection, Fabric Drop
25	Ea	Hh, Rem
25	Ea	Light Std Fdn, Rem
24	Ea	Light Std Shaft, Rem and Salv
24	Ea	Luminaire, Rem and Salv

CHECKED BY: ORIGINAL PLAN
APPROVED BY:



WASHINGTON STREET
CONSTRUCTION PLAN

CONSTRUCTION QUANTITIES (WASHINGTON STREET)		
QUANTITY	UNIT	WORK ITEM
53	Cyd	Subbase, CIP
3685	Sft	Sidewalk, Conc, 4 inch
590	Sft	Sidewalk, Conc, 4 inch, Decorative
1225	Ft	Conduit, Directional Bore, 1, 1 1/2 inch
1095	Ft	Cable St Ltg, 2kV, 2, 1/C #6 and 1, 1/C #6 Neutral
1095	Ft	Cable St Ltg, 2kV, 1, 1/C #10 and 1, 1/C #10 Neutral
1095	Ft	Cable St Ltg, 2kV, 1, 1/C #10 and 1, 1/C #10 Neutral
1095	Ft	Cable, Equipment Grounding Wire, 1/C #6
1095	Ft	Cable, Equipment Grounding Wire, 1/C #10
1095	Ft	Cable, Equipment Grounding Wire, 1/C #10
17	Ea	Hh, Polymer Conc
13	Ea	Light Std Fdn
13	Ea	Light Std Shaft, Install
13	Ea	Luminaire, Install

NO.	IFB PLANS	REVISIONS	DATE	BY
1			2/19/24	CW